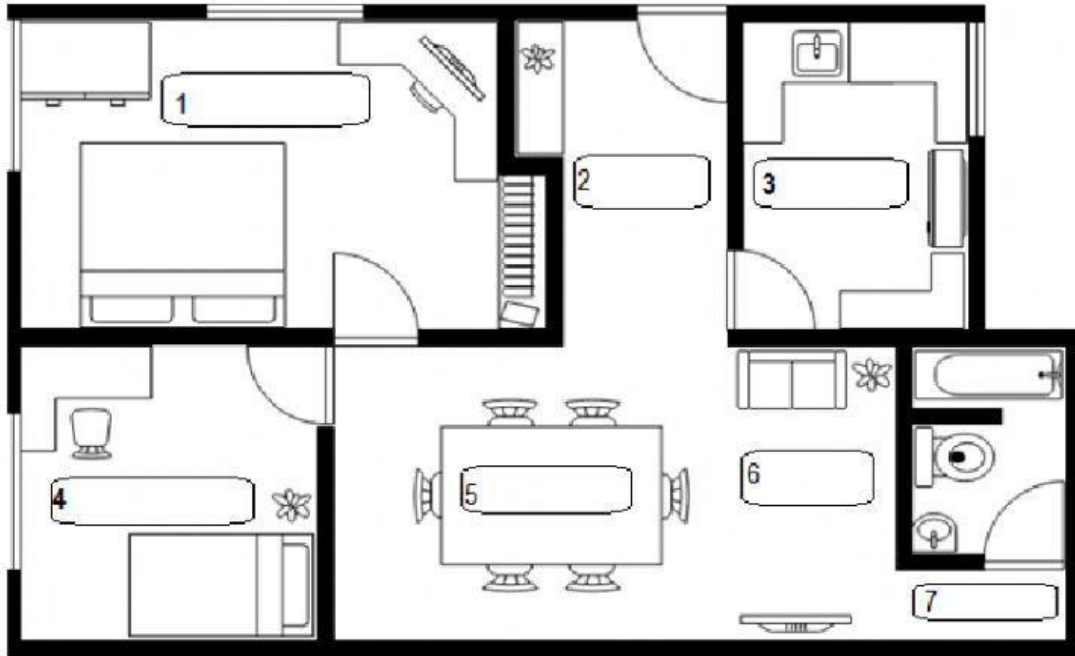


English Test

Parts of a house: look at house plan and label it.



There is/there are: write a brief description about the house plan and their furniture above.
Use there is and there are. (5 or 10 sentences)

1) _____ 6) _____

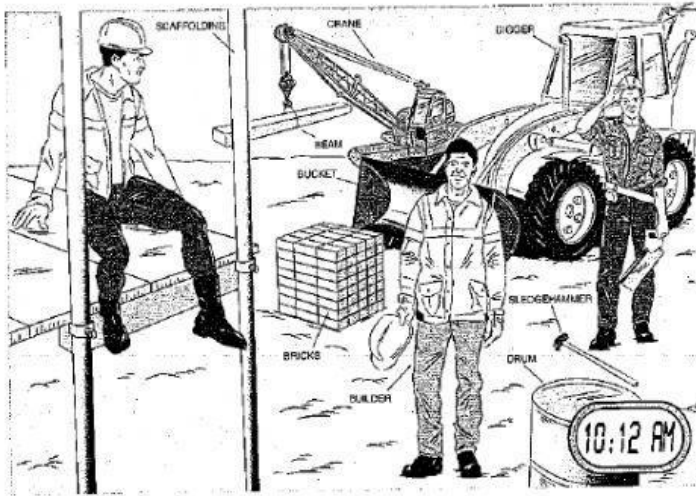
2) _____ 7) _____

3) _____ 8) _____

4) _____ 9) _____

5) _____ 10) _____

Preposition of place: look at the picture and write 10 sentences. Use there is/are and prepositions of place.



1.
2.
3.
4.
5.
6.
7.
8.
9.
10.

Present Simple: complete the dialogue with the correct form of the verbs in brackets.

A: How 1 _____ the thermosiphon _____ (work)?

B: Well, the cold water 2 _____ (enter) the system through the inlet. The water pressure 3 _____ (push) the water around the system.

A: So how 4 _____ the water _____ (become) hot?

B: It 5 _____ (flow) into the panel and the sun's rays 6 _____ (heat) it. The warm water 7 _____ (rise) to the top of the panel and it 8 _____ (pass) from the panel into the tank.

A: 9 _____ the tank _____ (have) a heater?

B: No, it doesn't. the hot water 10 _____ (stay) at the top of the tank. If you 11 _____ (open) the valve, the hot water 12 _____ (flow) from the top of the tank to the outlet.