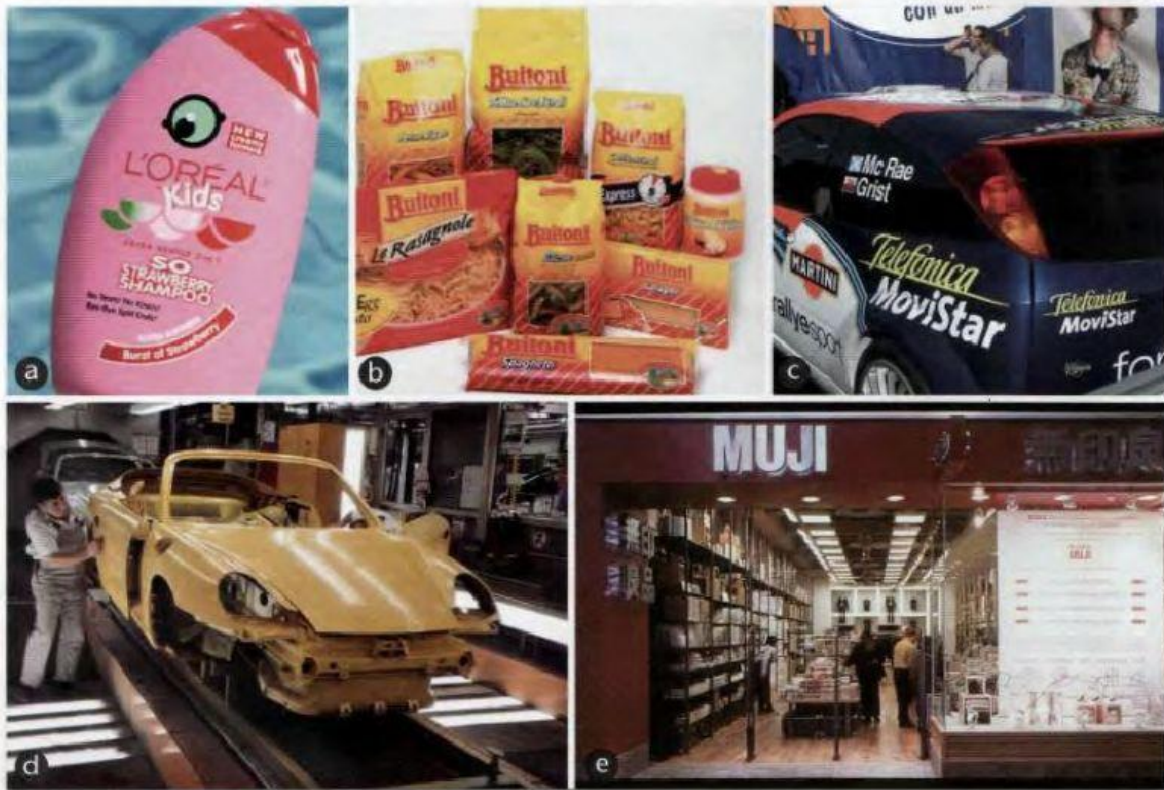


FOCUS ON WORDS



Match the photos a-e to these companies.

- 1 a Japanese retail company
- 2 a French cosmetics company
- 3 an Italian food company
- 4 a Spanish telecommunications company
- 5 a German car maker

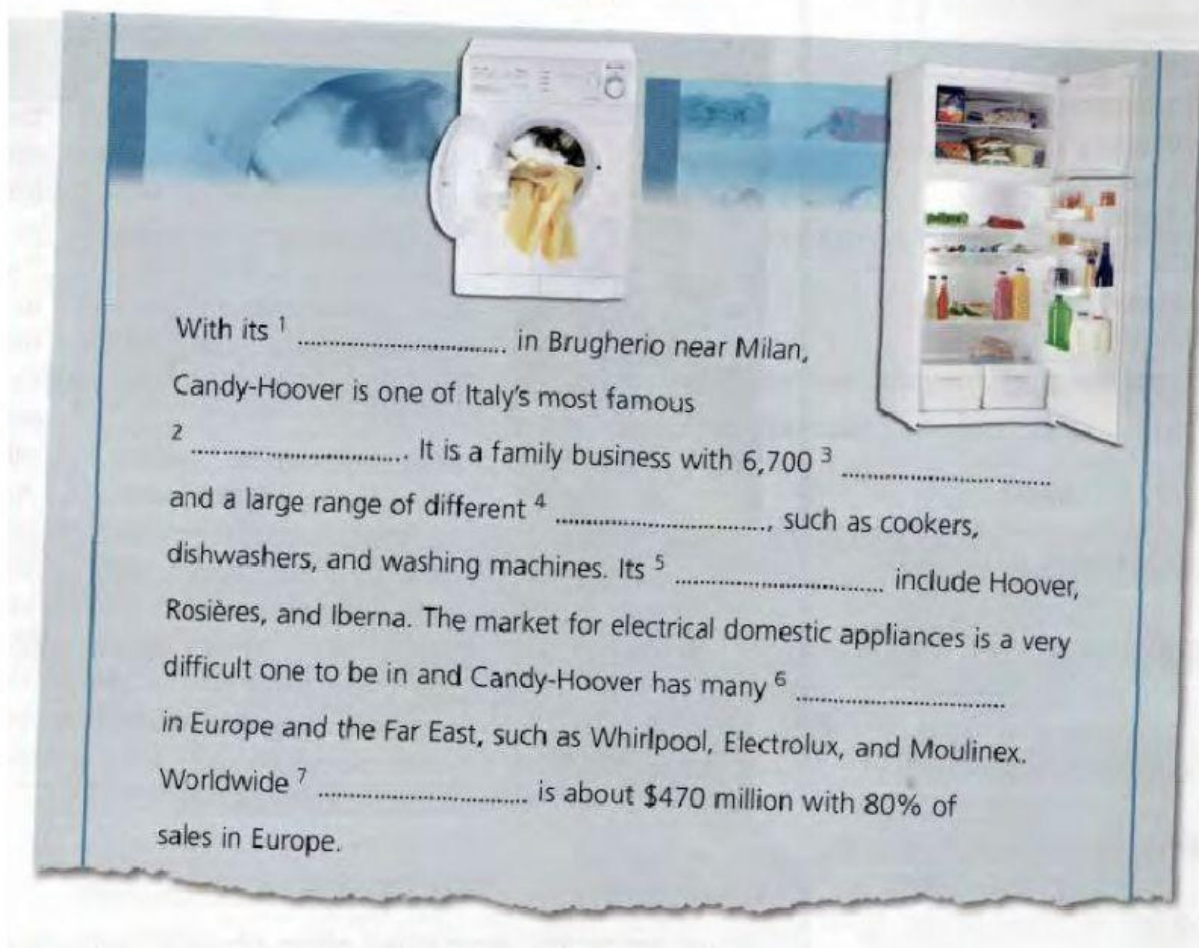
What type of company do you work for?

Work with a partner. Use a verb in B, and a noun in C to make sentences about the companies in A, as in the example.

A	B	C
Airbus Industrie Yahoo Walmart Thomas Cook Morgan Stanley Manpower Vodafone	offers manufactures / makes provides recruits operates sells organizes	cellular phone networks. temporary staff. aircraft. financial advice. travel and holidays. Internet services. consumer goods.

Read this company profile about the Italian white goods producer Candy-Hoover, and complete the text using the words in the box.

competitors brands head office products
companies turnover employees



With its ¹ in Brugherio near Milan, Candy-Hoover is one of Italy's most famous ² It is a family business with 6,700 ³ and a large range of different ⁴, such as cookers, dishwashers, and washing machines. Its ⁵ include Hoover, Rosières, and Ibernà. The market for electrical domestic appliances is a very difficult one to be in and Candy-Hoover has many ⁶ in Europe and the Far East, such as Whirlpool, Electrolux, and Moulinex. Worldwide ⁷ is about \$470 million with 80% of sales in Europe.

(((1.1))) Listen to the interview again and complete these questions.

- 1 Who you?
- 2 Where you?
- 3 What the company?
- 4 Do you any famous?
- 5 Is the electrical domestic appliances difficult?
- 6 How of that turnover in Europe?

