

1. Choose the correct word

The history of water supply.

Archimedes invented his It was a device to transport water from lower water to higher land.

- a) medicine b) microscope c) water screw

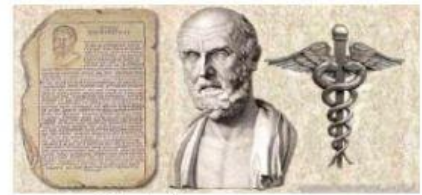


2. Fill in the gaps with the words.

sediments	medicine	filter	sleeve
-----------	----------	--------	--------

The history of water supply.

The Greek physician Hippocrates is called the father of..... After 500 BC, Hippocrates discovered the healing powers of water. He invented the practice of sieving water, and obtained the first bag, which was called the 'Hippocratic.....'. The main purpose of the bag was to trap that caused bad tastes or odours.

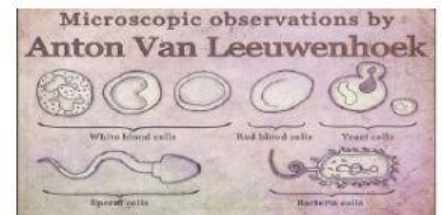


3. Choose the correct word.

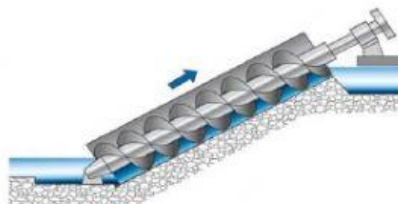
The history of water supply.

The invention of a microscope enables scientists to watch tiny particles in water. In 1676, Van Leeuwenhoek first observed ...

- a) large objects b) water microorganisms c) chlorine



4. Match the words with the pictures.



industrial pump	Archimedes' screw	aqueduct	the 'Hippocratic sleeve'	pond
-----------------	-------------------	----------	--------------------------	------

5. Choose the correct word.

Wastewater treatment plant

The of cleaning water is called primary treatment. Primary treatment removes large objects (face wipes, bricks, bottles).

- a) first stage b) second stage c) third stage

6. Choose the correct word.

Wastewater treatment plant.

The third stage uses chemicals to remove phosphorous and nitrogen from the water, but may also include filter beds and other types of treatment. The treated wastewater is slowly filtered through a bed of sand, which acts as a
screw / filter / pump / sleeve and catches any remaining particles.

7. Choose the correct word.

Wastewater treatment plant.

Phosphorous / Sand / Chlorine added to the water kills any remaining bacteria.

8. Choose the correct word.

Wastewater treatment plant.

When the wastewater is clean, it can be returned to
local rivers and streams / the wastewater plant.

9. Choose the correct word.

The history of water supply.

bacteria	salt	chlorine	pollution
----------	------	----------	-----------

Sir Francis Bacon started experimenting with seawater desalination. He attempted to remove particles by means of sand filtration.

10. Choose the correct answer. *Wastewater treatment plant.*

What is wastewater?

- a) bottled water
b) water that has been used in homes, businesses, and factories and so is not clean
c) clean drinkable water