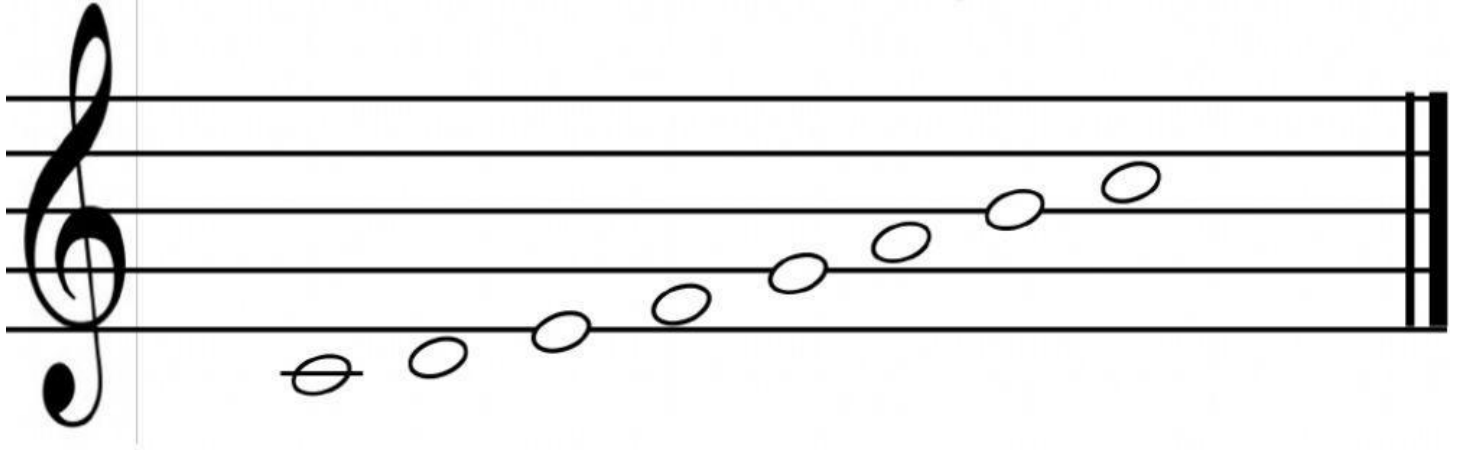
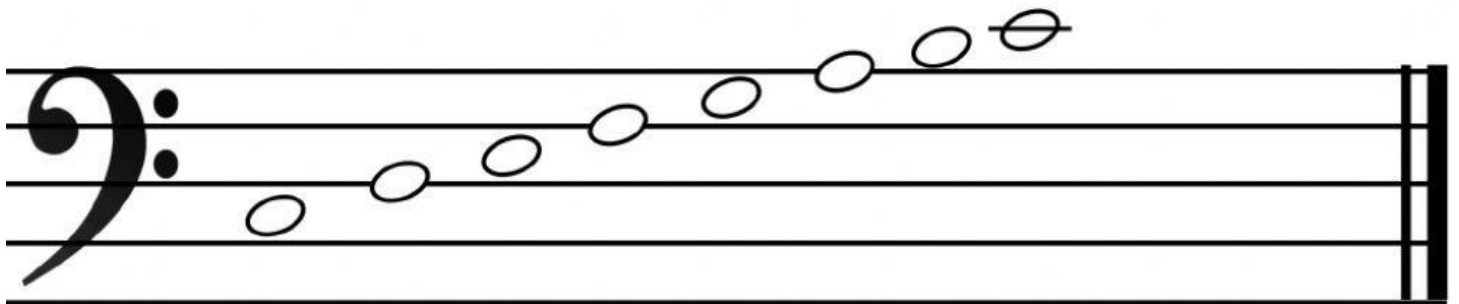


Drag and drop the music note names to the correct place



Do	Re	Fa	So	Mi	Ti	La	Do
C	D	F	G	E	B	A	C



Do	Mi	Re	So	Fa	La	Ti	Do
C	E	D	G	F	A	B	C

Match with the correct answer

- 1. This is the Treble clef



- 2. This is the Bass clef



- 3. The bass clef is also called as

Low sounds

- 4. The Treble clef is also called as

High sound

- 5. This type of sounds are written in the bass clef

G clef

- 6. This type of sounds are written in the treble clef

F clef

Choose the name for each note

