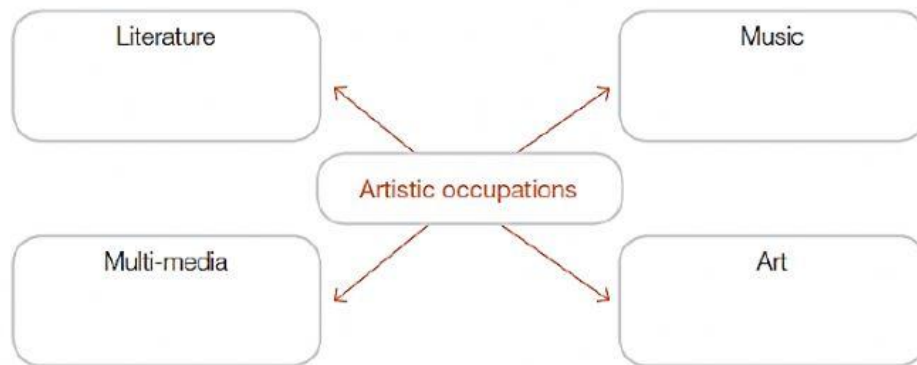


UNIT 3: THE ARTS WORKSHEET 2

I. Complete the diagram with the name of artistic professions or occupations in each area.

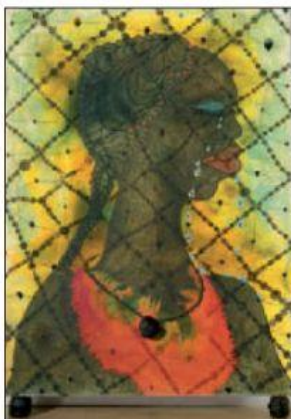


II. PRE-READING: What materials were used to create these works? Choose from the words in the box.

bronze	concrete	dung	gold	cardboard	ice
plastic	rubber	sand	plaster	snow	wood



III. Look at the pictures and select the alternative you think is correct. The text is about...



- a. four controversial modern artists. c. four traditional art forms.
b. four famous works of modern art. d. four unusual materials used in

IV. Read the text and answer the questions from e-h.

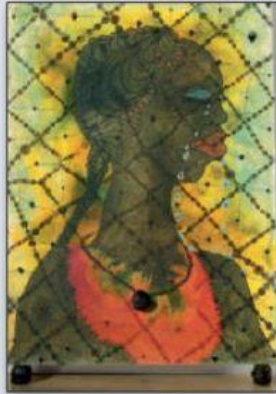
Inspiring artists

I.

For many years, the famous artist Chris Ofili has used elephant **dung** in his paintings as a symbol of his African heritage.

One of his best-known works is his *No Woman No Cry*, the title of one of Bob Marley's songs.

The painting is a tribute to the family of Stephen Lawrence, a London teenager who was murdered by a racist gang. The boy's face can be seen in each of the crying woman's tears. The painting stands on two dried, varnished lumps of elephant dung. A third is used as the pendant of the necklace.



II.

English artist Rachel Whiteread creates elegant and poetic sculptures which typically take the form of **casts**. Since the late 1980's, she has created unusual sculptures of everyday domestic items. One of her most famous sculptures was *House*- a concrete cast of the inside of a town house.

Rachel Whiteread has also used materials like plaster, rubber, and **styrofoam** to define the space around or inside objects and buildings.



III.

Tracey Emin's *Roman Standard*, which features a small bronze bird on top of a four-meter high bronze **pole**, is a tribute to Liverpool's famous symbol the Liver Bird. Since 1992, this artist has made a series of drawings and prints of birds.

For her, birds are the angels of this earth that represent freedom, strength and femininity.

The sculpture is the size of a **sparrow**. It disappears when the people view it from the front and only reappears as the viewers move left to right. It has been very controversial, as many people have complained about the high cost of such a small sculpture.



IV.

Since he was an art student, Andy Goldsworthy has worked with natural materials to make unique sculptures. He usually works outdoors to create structures out of stone, snow, ice sand, wood or leaves. A breath-taking but temporary example of his work is the ice arch in the picture. He built it one early winter morning in Canada- as the sun became warmer, the arch gradually **melted** and finally collapsed.



- What strange material does Chris Ofili use? Why?
- What is *No Woman No Cry*?
- What does Rachel Whiteread represent in her sculptures?
- What materials does she use?
- How long has Tracey Emin worked on birds?
- What do birds represent to her?
- Why has Andy Goldsworthy worked with natural materials?
- Where does he usually work?