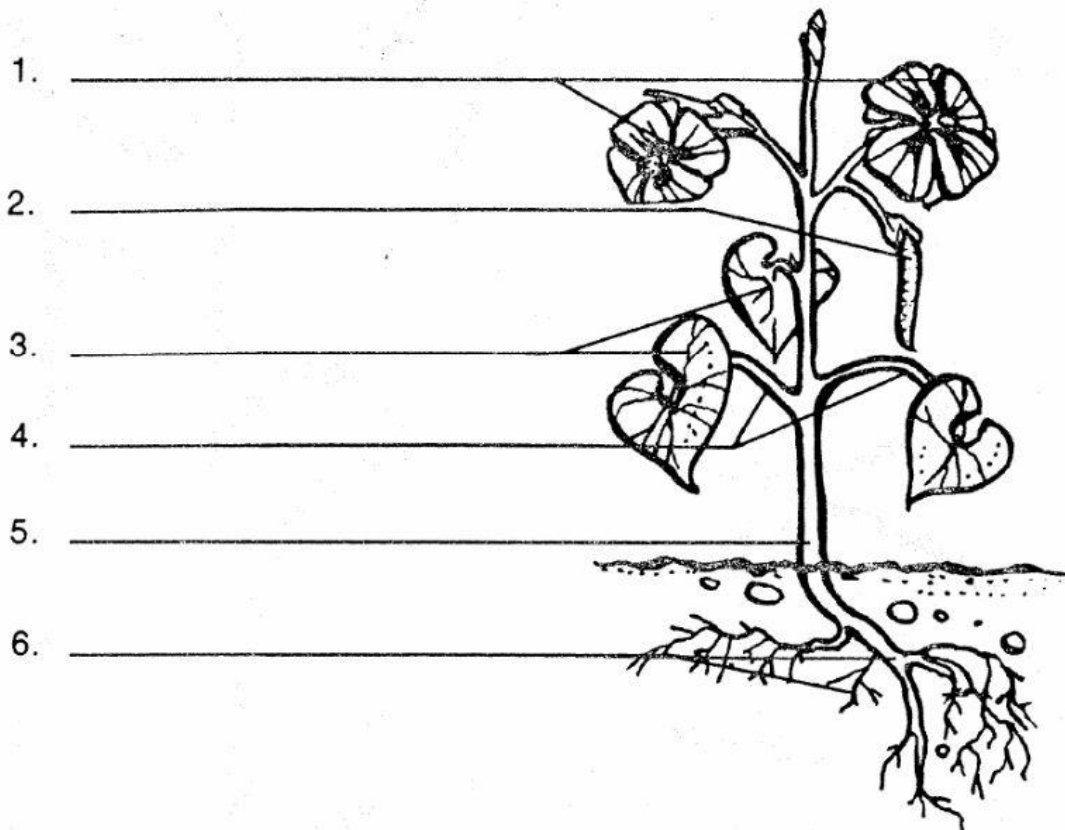


## Parts of a Plant

Read the story then label the parts of the plant.



A plant has **roots** which keep it in the ground. The roots also take in water and minerals from the soil.

Above the ground is the **main stem**. It holds up the plant and carries water throughout the plant.

Secondary stems , or **petioles**, grow from the main stem. These stems have the **leaves**. Green leaves make most of the plants food.

The **flowers** of the plant produce **fruit**. Inside the fruit are the **seeds**. The seeds produce new plants.

# Plant Facts

Circle the letter in the correct column for each statement .

	True	False
1. Plants have three parts: the root, the stem, and the carbon dioxide.	H	Y
2. Plants can live without water.	I	O
3. Roots hold a plant in the ground.	U	L
4. Plants and animals produce their own food.	O	H
5. Stems carry water from the roots to the leaves.	A	G
6. Food is make in the leaves of green plants.	V	F
7. All leaves look alike.	R	E
8. Green plants need sunlight.	E	C
9. All plants have chlorophyll.	S	A
10. Seeds store food.	R	S
11. Flowering plants produce fruit.	S	D

What do you have that a corn plant has?

To find out, fill in the letters you circled above on the lines of the question numbers below.

\_\_\_\_\_  
 1    2    3            4    5    6    7            8    9    10    11



## Plant Parts Review

Circle the correct answer.

1. A plant has roots which keep it
  - a) in the ground
  - b) living
  - c) from getting cold
2. The main stem above the ground helps
  - a) the bugs bring food
  - b) the flowers bloom
  - c) carry water throughout the plant
3. The secondary stems grow out from the main stem, and these stems have
  - a) thistles
  - b) flowers
  - c) leaves
4. Green leaves make most of the plant's
  - a) chlorophyll
  - b) food
  - c) seeds
5. The flowers of the plant produce
  - a) seeds
  - b) fruit
  - c) leaves
6. Roots and stems carry
  - a) sunlight and sugar
  - b) nutrients and water
  - c) carbon dioxide and sugar
7. Photosynthesis takes place in the
  - a) root
  - b) leaves
  - c) stem