



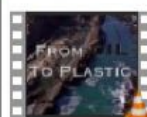
<https://youtu.be/IwdUwffecM>

### Petroleum origin, refinery and distillation.

Many of the \_\_\_\_\_ we **use** everyday **are made out of** \_\_\_\_\_. *As a matter of fact (De hecho)* 90% of the **products** we **use** today \_\_\_\_\_ some type of **plastic**. **Think** about how many **items** (artículos) in your **home are made** from **plastic**. Do you **know** where **plastic** \_\_\_\_\_ from?



**Plastic is made from oil.** \_\_\_\_\_ (fuentes) of **oil were formed** between \_\_\_\_\_ million and \_\_\_\_\_ million **years** ago when the \_\_\_\_\_ (restos) of **plants** and **animals**, *such as* \_\_\_\_\_, **be composed** on **ancient sea floors** and **lake** bottoms



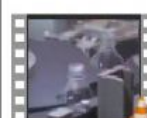
and under **intense** \_\_\_\_\_ and **high** \_\_\_\_\_ within (dentro de) the **Earth were transformed** into **natural gas**, \_\_\_\_\_ (carbón) and \_\_\_\_\_ (petróleo).



That's why **they are called** \_\_\_\_\_ (combustibles sólidos). Let's **explore** how two different types of **plastic are made from** \_\_\_\_\_ or \_\_\_\_\_, **extract** it from the **Earth**.



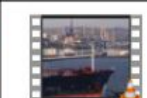
When a \_\_\_\_\_ (fuente) of **oil beneath** (debajo de) the **earth has been identified**, \_\_\_\_\_ (agujeros) **are dug** (excavados) into the **ground** and the **oil is pumped** out (bombeado).


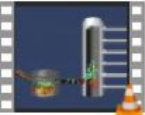



**Oil drilling** (la extracción de petróleo) **can** also **take** place under the **ocean**. \_\_\_\_\_ **are built** to **support drilling** (taladrado) **operations** and \_\_\_\_\_ (petroleros) **are needed** to **transport** the **oil to shore** (a la costa).



Then the **crude** (/krud/) \_\_\_\_\_ (petróleo crudo) **has to be changed** in form (de forma) before it **can be used to make petroleum-**



based _____, like plastic. The crude (/krud/) oil was transported to a large processing facility called the _____.	
A _____ breaks down (descomponen) the crude (/krud/) oil into a variety of components with different sizes, weights and boiling (ebullición) _____.	
The liquid crude (/krud/) oil is pumped (bombeado) through hot furnaces (hornos) and distillation _____ (torres de destilación) where the lightest (más ligeros) _____ rise (suben) to the top and the heaviest (más pesados) settle (se depositan) at the bottom (base) of the tower.	
Look at the _____ (vapor) being released (lanzado) at the _____. In addition to oil the production of plastic requires the use of other natural _____ (recursos) such as _____ and _____.	

Drag and drop to answer the questions:

SUBJECT	VERB	OBJECT
A production facility	mainly used	selective boiling and condensation.
The process of separating the substances from a liquid mixture	where are converted	as a fuel.
A thick liquid	by using	raw material into products of value.

	SUBJECT	VERB	OBJECT
¿What's crude oil?			
¿What's a refinery?			
¿What's a distillation?			