

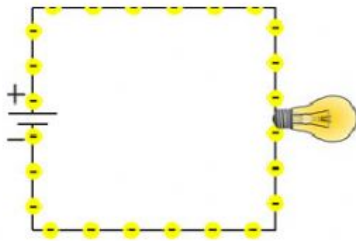


Name: _____

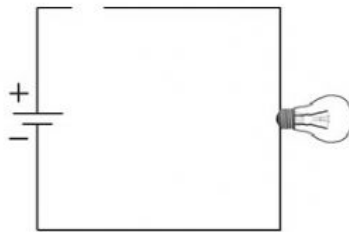
Date: _____ Teacher: Alejandra Cardenas

I. Write on the line if it is open or closed circuit.

1.



2.



II. Write the word next to the description it matches.

heat	thermal energy	volume
closed circuit	open circuit	pitch

3. _____ a circuit with no gaps or breaks

4. _____ how high or low a sound is.

5. _____ a circuit with an open path.

6. _____ how loud or soft a sound is.

7. _____ the energy of moving particles in matter.

8. _____ the transfer of thermal energy from one place to another.

III. Write the word next to the description it matches.

9. _____ to bend light.

- absorb

10. _____ to take in light.

- reflect

11. _____ to bounce light off an object.

- shadow

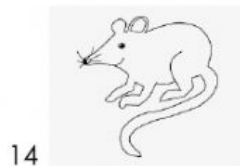
12. _____ a dark area formed when an object blocks light.

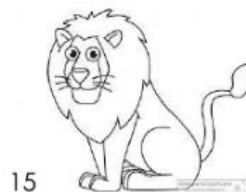
- refract

13. _____ energy we can see.

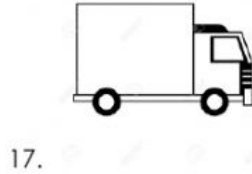
- light energy

IV. Identify if it is low pitch and high pitch sound





V. Use the words loud and soft to compare the sounds of a bicycle and a large truck.



VI. Write True or False to the following questions,

18. Guitars, violins, cellos, and harps are kinds of stringed instruments. _____

19. A sound's pitch depends on its frequency. _____

20. The movement of electric charge from one place to another is called electric current.
