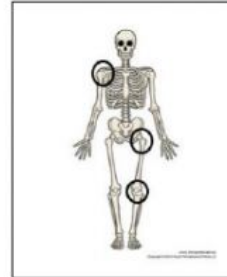


## THE LOCOMOTOR SYSTEM

### What's the Locomotor System?

The **Locomotor System** is formed by

the \_\_\_\_\_, the \_\_\_\_\_ and the \_\_\_\_\_.



### The skeleton

The skeleton is inside our body. The **Skeleton** is made up of \_\_\_\_\_.



We have \_\_\_\_\_ bones in our body when we are adults.

### What are bones like?



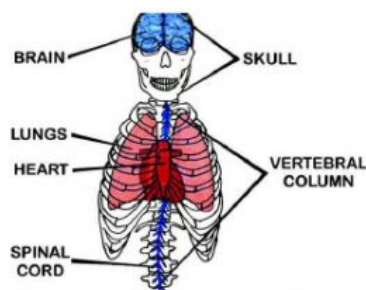
Hard or soft?

**Bones** are \_\_\_\_\_ and \_\_\_\_\_.

### What does the skeleton do?

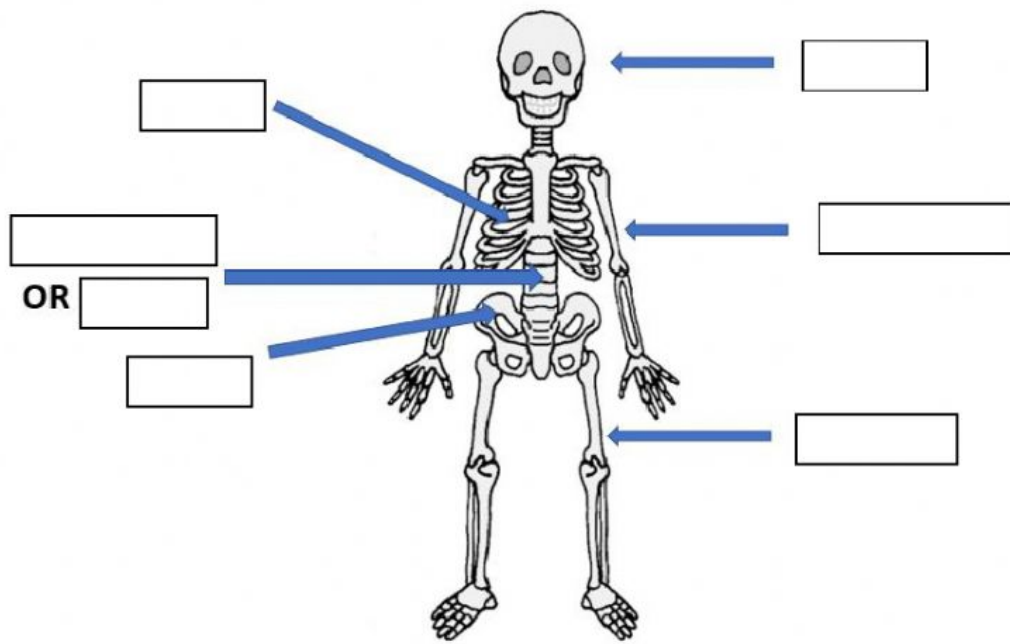


The **skeleton** \_\_\_\_\_ our body.



The **skeleton** \_\_\_\_\_ our organs.

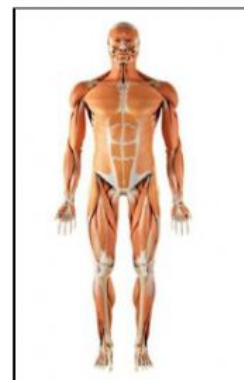
## IMPORTANT BONES IN OUR BODY



## Muscles

**Muscles** help \_\_\_\_\_ our **bones**.  
There are more than \_\_\_\_\_  
**muscles** in our body.

**Muscles** are \_\_\_\_\_, \_\_\_\_\_ and \_\_\_\_\_.



## Joints

**Joints** are the \_\_\_\_\_ between the \_\_\_\_\_. They make our skeleton \_\_\_\_\_.

