



# EVALUACIÓN DE LOS APRENDIZAJES

joy to learn



|              |                |          |   |          |              |                |
|--------------|----------------|----------|---|----------|--------------|----------------|
| SCHOOL YEAR: | 2021-2022      | UNIT N°: | 1 | SUBJECT: | Science      |                |
| TEACHER:     | Vincent Suárez |          |   |          | GRADE: 6 EGB | CLASS: A-B-C-D |
| DATE:        |                |          |   |          | SCORE:       |                |
| STUDENT:     |                |          |   |          | /31          | = /10          |

| TYPE OF EVALUATION:   | Written Lesson | UNIT TITLE:  | Living Things |
|---|----------------|--|---------------|
| SKILLS  |                | EVALUATION   |               |
| 1. CN.3.1.4 Identify and explain invertebrates and their characteristics and communicate measures to prevent their extinctions. |                | CE.CN.3.1. Explains the importance of invertebrates, recognizing the threats to which they are subject and proposing measures for their protection in the natural regions of Ecuador, based on guided observation and inquiry and on the understanding of their characteristics, classification, diversity and the differentiation between the reproductive cycles of vertebrates and invertebrates. |               |
| 2. CN.3.1.5 Explain and identify the parts of the flower and the pollination process, and propose ways to protect bees.         |                |  |               |

|                       |   |
|-----------------------|---|
| GENERAL INSTRUCTIONS: | Read carefully the questions.<br>Use blue or black pen.<br>Don't use whiteout or cross out the answers. These answers will be marked as incorrect.<br>Don't use pencil. |
|-----------------------|---|

## I. Sentence completion (7 marks)

These sentences describe the different parts of a flower and their functions.

Use the words in the box to fill in the spaces below.

stigma ovary petals anthers stamens pollen carpel

The \_\_\_\_\_ often have bright colours to attract insects.

The male parts of the flower are the \_\_\_\_\_.

They make \_\_\_\_\_ in their tips, which are called \_\_\_\_\_.

The female part of the flower is the \_\_\_\_\_. It is made up

of the \_\_\_\_\_, which collects pollen, and the \_\_\_\_\_,

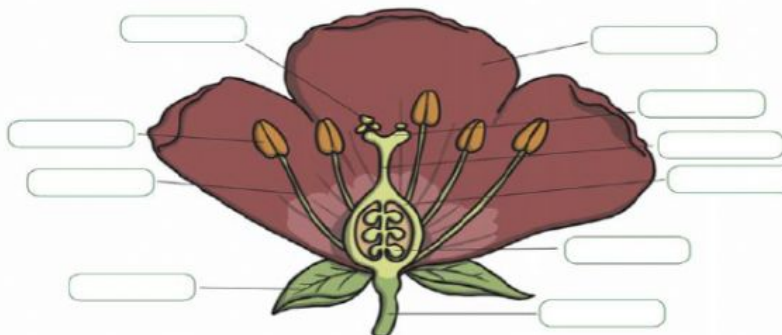
which contains the eggs.

## II. Labelling. (10 marks)

Label the parts of the flower:

petal pollen anther stigma style  
ovary ovule stem filament sepal

### Parts of a Flower

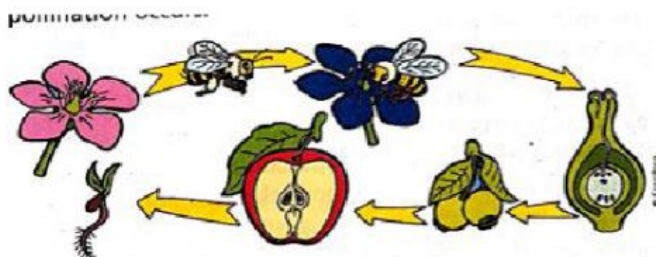




III. Write three characteristics of invertebrates (3 marks)

1. \_\_\_\_\_
2. \_\_\_\_\_
3. \_\_\_\_\_

IV. Look at the image and explain with your own words the process of pollination (5 marks)



---

---

---

V. List the six different types of invertebrates (6marks)

|  |  |  |
|--|--|--|
|  |  |  |
|  |  |  |

Total 31/31 = 10/10

IF YOU FINISH YOUR TEST, PLEASE CHECK IT AND GIVE IT TO THE TEACHER.