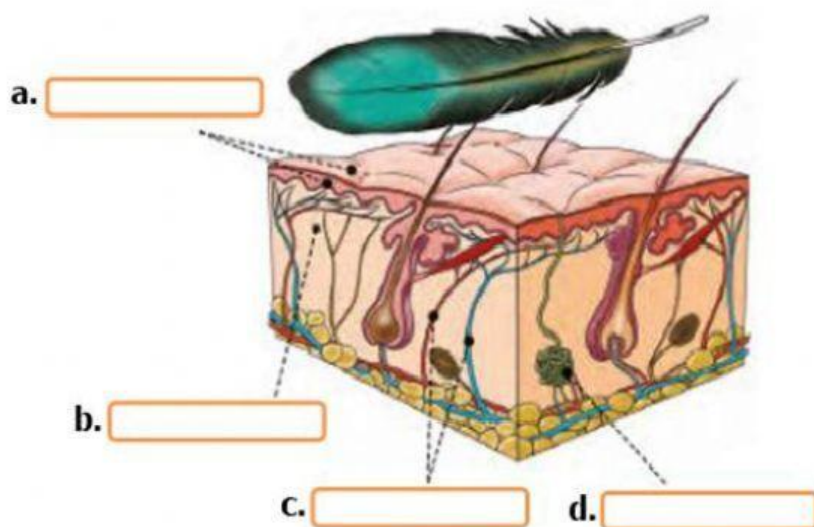


1. Complete the sentences about sight with a word from the box. Some words can be used more than one.

brain cornea iris lens optic nerve pupil retina retina

- a) Light passes through the _____ and enters the eye through the _____.
- b) The coloured part of the eyes is the _____.
- c) The _____ focuses the light on the _____ at the back of the eye.
- d) Nerve receptors in the _____ detect light and send electrical signals to the _____, and from there to the _____.

2. Label the diagram of the skin.



3. Classify the words according to the sense they are part of.

auditory canal	auditory nerve	cochlea	cornea	dermis
eardrum	epidermis	gustatory nerve	iris	lens
nosril	olfactory bulb	optic nerve	ossicles	pupil
blood	vessels	retina	taste bud	tongue

Sight	Hearing	Taste	Smell	Touch

4. Are these short bones, flat bones or long bones? Write.

- a) Femur _____ b) Humerus _____
c) Ribs _____ d) Scapula _____
e) Sternum _____ f) vertebrae _____

5. Match the two halves of the sentences about muscles.

- | | |
|---------------------------|--|
| a. Skeletal muscles... | 1. are found in organs like the stomach and the intestines |
| b. Voluntary muscles... | 2. are joined to bones by tendons. |
| c. Smooth muscles... | 3. are muscles that we can control and move when we want. |
| d. Involuntary muscles... | 4. make the heart move and beat. |
| e. Cardiac muscles... | 5. work automatically – we cannot control them. |