

Name: _____

SUBTRACTING NUMBERS VERTICALLY

1. Calculate vertically. Circle the answer.

a. $4286 - 3171$

	4	2	8	6
-	3	1	7	1

b. $7772 - 3623$

	7	7	7	2
-	3	6	2	3

c. $6381 - 866$

	6	3	8	1
-		8	6	6

2. Write the expression and solve it vertically. Circle the answer.

- a. The circus director has 3373 euros. She uses 1242 euros. How much money is the director left with?

$3373 \text{ €} - 1242 \text{ €} = 2131 \text{ €}$

	3	3	7	3
-	1	2	4	2
	2	1	3	1

Answer: 2131 €

- b. The magician has 3817 euros. He uses 2345 euros. How much money is the magician left with?

$\text{€} - \text{€} = \text{€}$

-				

Answer: _____ €

Place the numbers 1, 2, 3, 4, 5, 6, 7 and 8 in the grid so that the expression produces the correct result. Use each number only once. Come up with two different solutions.

--	--	--	--

 -

--	--	--	--

 = 1234

--	--	--	--

 -

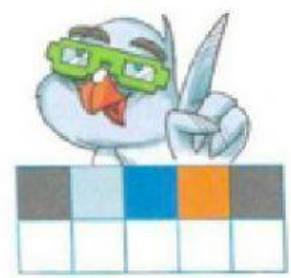
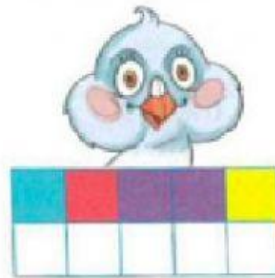
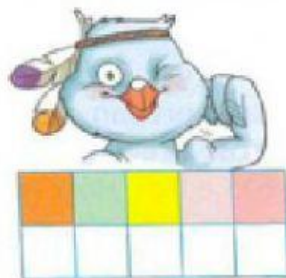
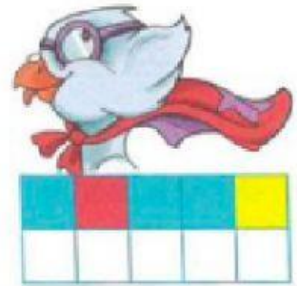
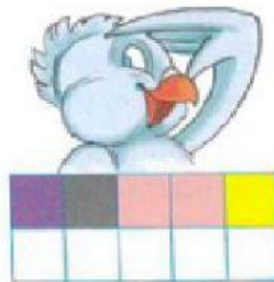
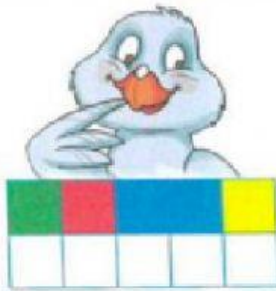
--	--	--	--

 = 1234

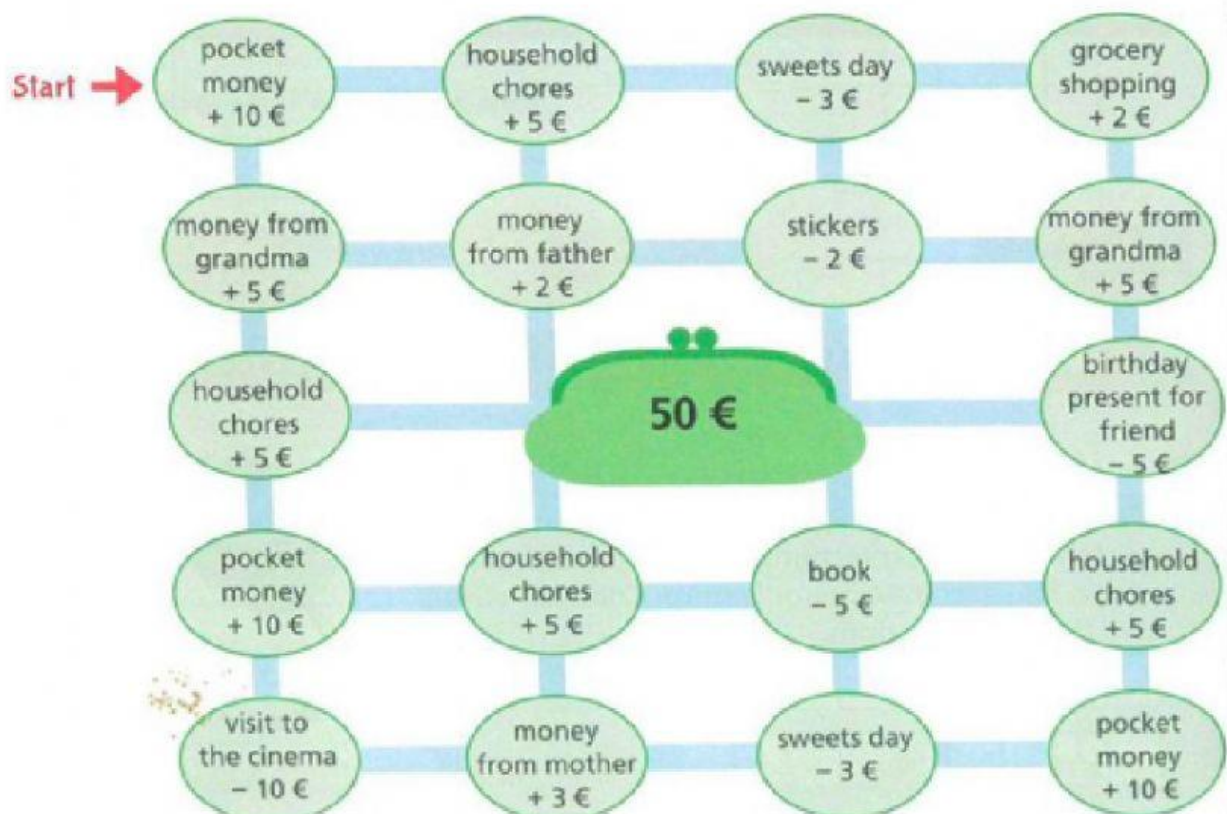


3. Decipher the code to find the names of the doves.

PUFFY PUPPY FILLY CUDDY ROYAL INDRI



4. Help Emma save exactly 50 euros. You can visit each oval only once. Draw the route.



5. Work out what numbers the pictures represent.

a.

$$\begin{array}{r}
 5 \quad 1 \quad \bullet \quad \bullet \\
 - \quad \star \quad \text{flower} \quad 6 \quad 4 \\
 \hline
 \star \quad 3 \quad 1 \quad 3
 \end{array}$$

$\bullet = \underline{\hspace{2cm}}$

$\star = \underline{\hspace{2cm}}$

$\text{flower} = \underline{\hspace{2cm}}$

b.

$$\begin{array}{r}
 \text{half circle} \quad 3 \quad 4 \quad 3 \\
 - \quad 3 \quad \blacktriangle \quad \blacksquare \quad \blacktriangle \\
 \hline
 4 \quad 0 \quad 8 \quad 1
 \end{array}$$

$\text{half circle} = \underline{\hspace{2cm}}$

$\blacksquare = \underline{\hspace{2cm}}$

$\blacktriangle = \underline{\hspace{2cm}}$

6. What number? Find both alternatives.

- The number has four digits.
- All the digits are odd. (số lẻ)
- The difference between the digit in the thousands column and the digit in the ones column is 0.

- The digits add up to 10.
- The largest digit is in the hundreds column.

The number is _____ or _____.