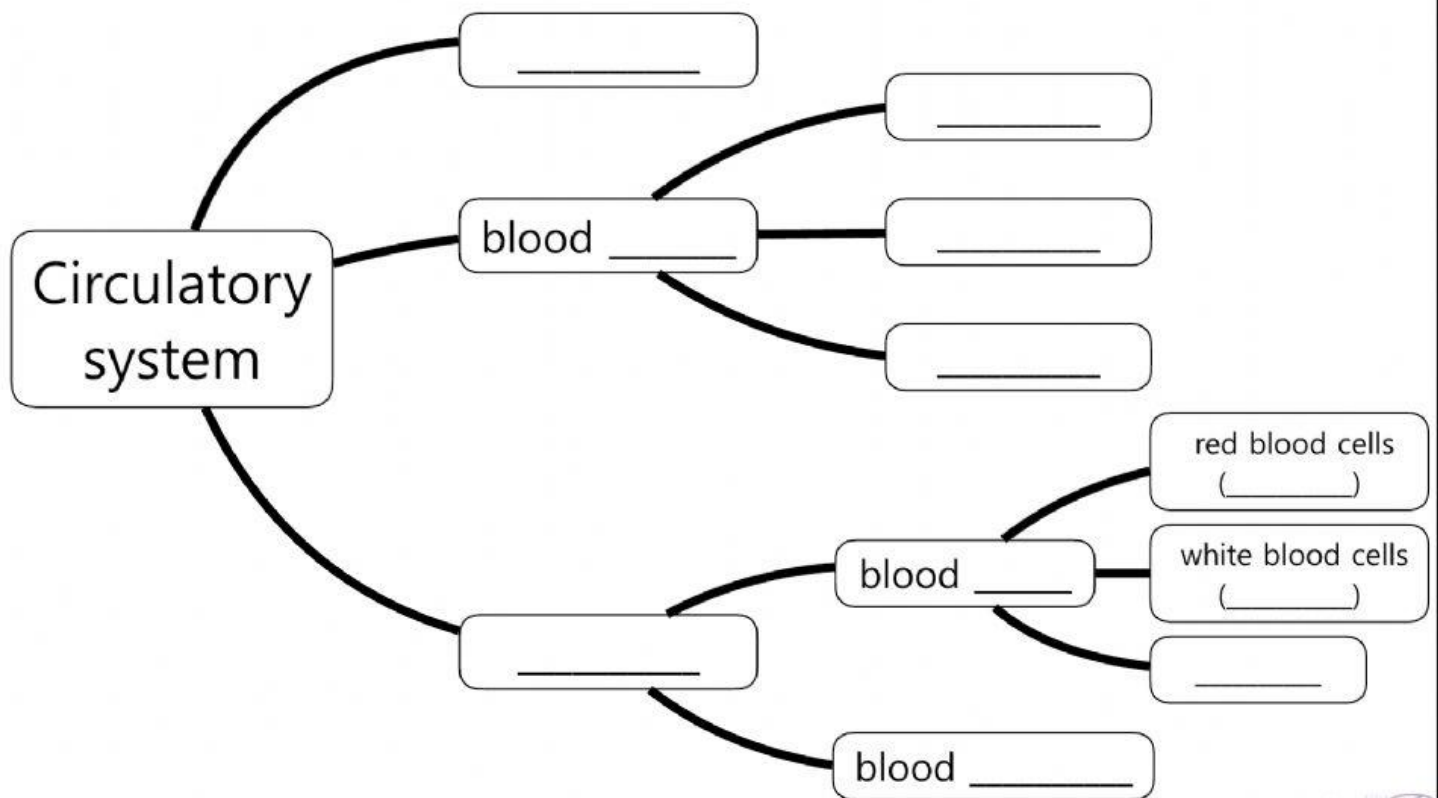
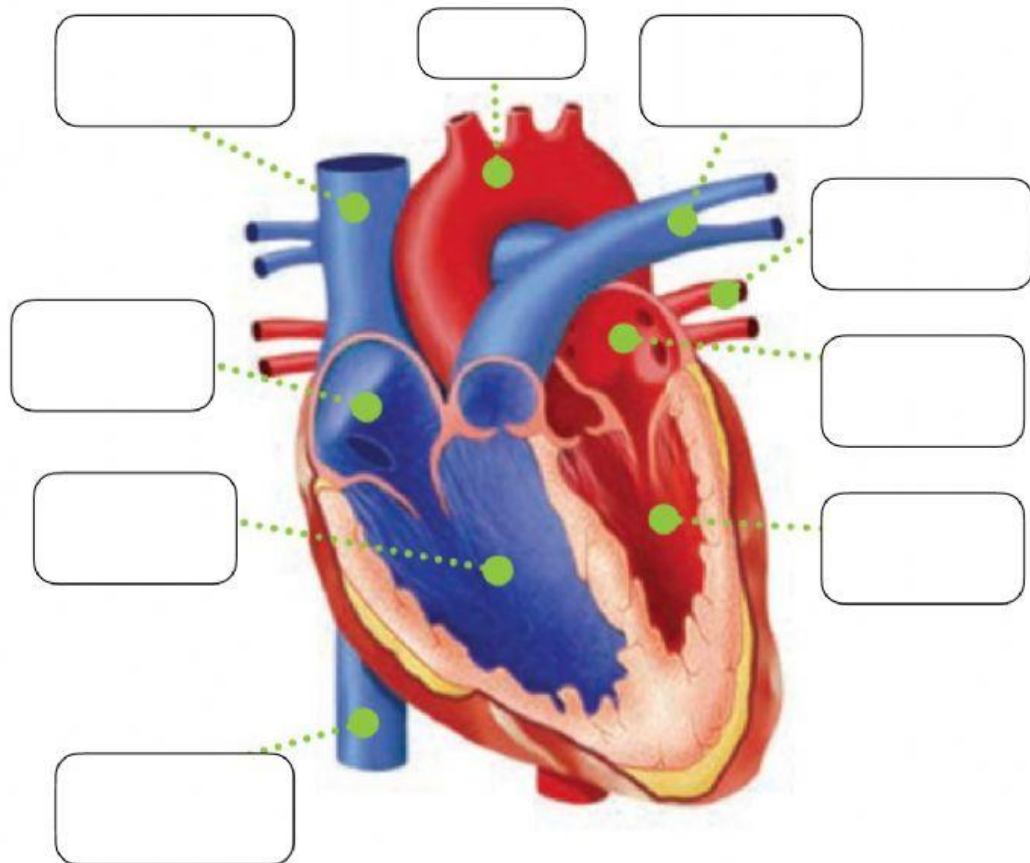


Complete the concept map about the circulatory system:



Complete the picture with the parts of the heart:



Complete the text with the words in the box:

lungs heart arteries heart veins

First the blood enters the _____. From there it is pumped into the _____ where it absorbs oxygen. Then it travels back into the _____.

Next it is pumped around the body. The _____ carry the blood to the muscles and organs. The oxygen in the blood is absorbed by the muscles and organs.

Then the blood travels back to the heart through the _____.

Match the parts of the heart to their definitions:

- | | |
|--------------------|--------------------------------------|
| 1. Left atrium | A. Right upper chamber of the heart. |
| 2. Right ventricle | B. Left upper chamber of the heart. |
| 3. Left ventricle | C. Left lower chamber of the heart. |
| 4. Right atrium | D. Right lower chamber of the heart. |

Decide whether the following sentences are TRUE or FALSE. If they are false, rewrite them so that they are true.

The blood vessels act like a pump.

The upper chambers in the heart are called ventricles. The lower chambers are called atria.

In the lungs, red blood cells absorb oxygen.

The heart pumps oxygenated blood into the lungs.

Arteries carry oxygenated blood.

Veins carry blood that contains carbon dioxide.
