

GRAMMAR

PREPOSITIONS - part 2

Preposition is used to show **place/position** or **movement/direction**. They are usually used before nouns and pronouns.

A. Showing position: on, in, above, under, in front of, behind

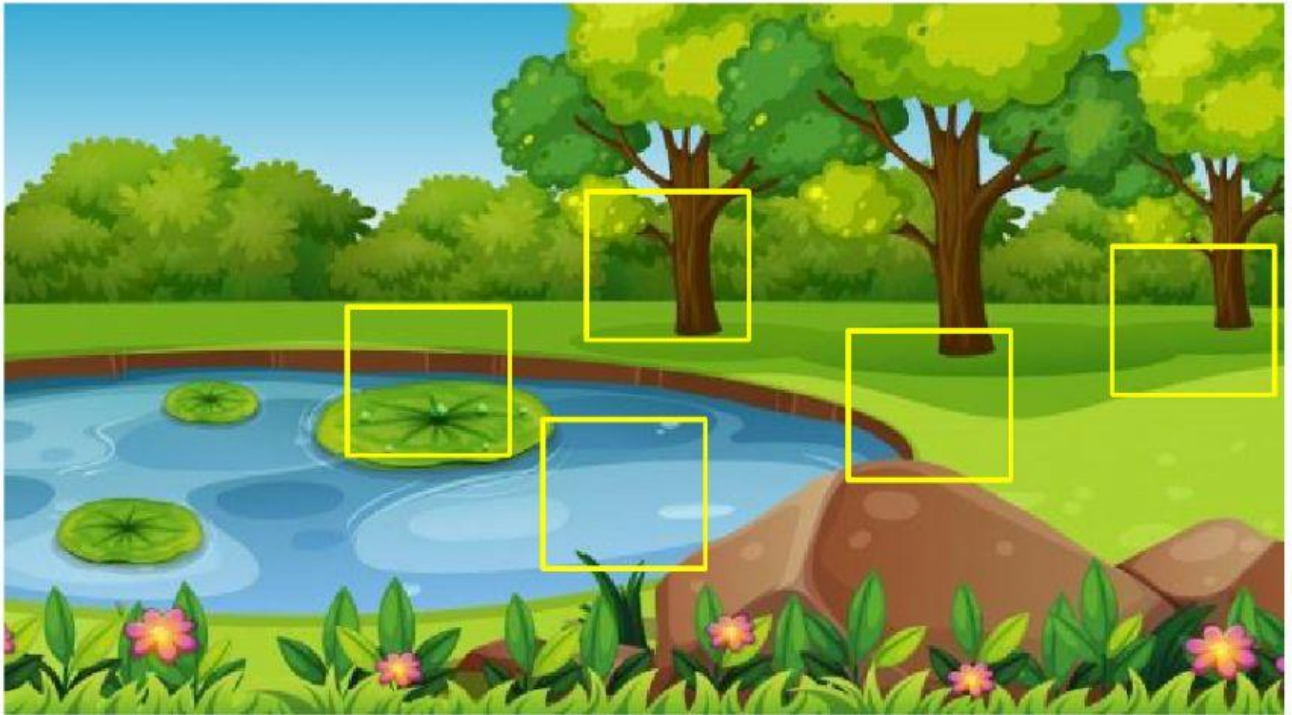
B. Showing movement: to, from

C. Study the picture carefully. Choose the correct preposition in the sentence below.



1. The computer is the table.
2. The ball is of the cat.
3. The skateboard is the bed.
4. The flower is the vase
5. In the poster we can see the rocket flying the clouds.

D. Read the sentence carefully. Then place the animals in their correct position.



1. The frog is **on** the big lotus leaf.
2. The butterfly is flying **above** the big rock.
3. The fish is **in** the pond.
4. The monkey is hiding **behind** the tree.
5. The rabbit is resting **under** the tree.