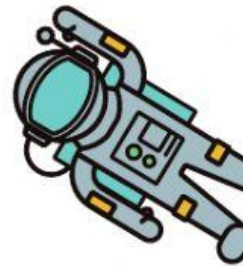




# CULTURAL AWARENESS

## SPACE EXPLORATION

Pulse 2, page 56



### A DAY IN THE LIFE OF AN **ASTRONAUT**

so it goes round the Earth 16 times a day!

Hi! I'm Serena Hughes and I'm an American astronaut on the International Space Station. This is my day.

**8.00 am:** I wake up to the sound of one of my favourite songs. Mission Control Center in Houston plays a different song for each crew member every morning!

**8.15 AM:** I get up and have a wash. We have to transport water from Earth to the space station. This means we can't have showers because they use too much water. If we use too much water for washing, we won't have enough to drink!

**8.30 AM:** I have breakfast with the rest of the crew. Today it's pancakes. Usually I love pancakes, but nothing tastes very nice in space!

**9.00 AM:** I try to 'fly' to my work station to switch on my computer. Everyone is weightless in space because there is no gravity, so moving around is difficult!

**1.00 PM:** It's lunchtime and I'm hungry! I'd love some fresh fruit, but it isn't allowed. If someone eats a banana, the whole space station will smell of bananas!

**2.00 PM:** Now it's time for some housework! In space, we have to take the rubbish out – just like we do at home! We load it into a spacecraft, which will take it down to Earth.

#### Word check

gravity housework muscles weightless sleeping bag

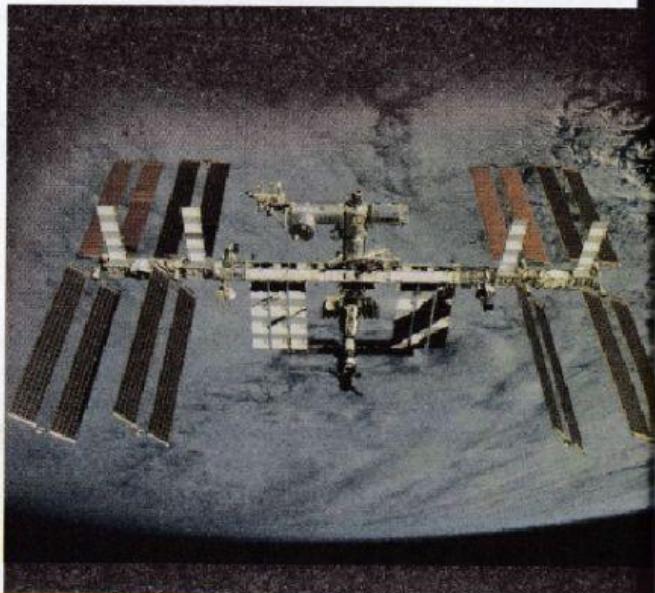


**3.00 PM:** I spend half an hour on the exercise bike. You don't use your muscles in space because everything is weightless. If I don't do daily exercise, my body will become very weak.

**4.00 PM:** I go to the laboratory to check on an experiment we're doing. We're trying to see if we can grow vegetables in space!

**7.00 PM:** I have dinner, then I send some emails to my friends and family on Earth. They'll worry about me if they don't hear from me!

**10.00 PM:** It's bedtime! I get into my sleeping bag and lie down in my little cabin. There will be another day in space tomorrow!



1. Read and listen to the blog post.



2. Choose the best answers for the following questions below.

1. Why is it difficult to get from one place to another inside the space station?

because everyone is (weightless/ heavy)



2. Where do astronauts send their rubbish?

They (take it down/load) it into a spacecraft, which will (take it down/load) to earth

3. Why does Serena do exercise?

because if she doesn't do daily exercise, her body will become very (strong/weak)

4. How does Serena communicate with people she knows on Earth?

She (sends text message /sends emails).

5. What problems do you think astronauts have with washing and eating when they go to space?

a) They can't have showers because they use (too much/much) water.

b)( Nothing/ everything) tastes very nice.

c) (fresh/frozen) fruits are not allowed because it makes the whole space station (stuck/smell).

