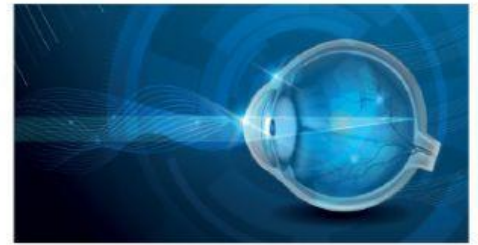


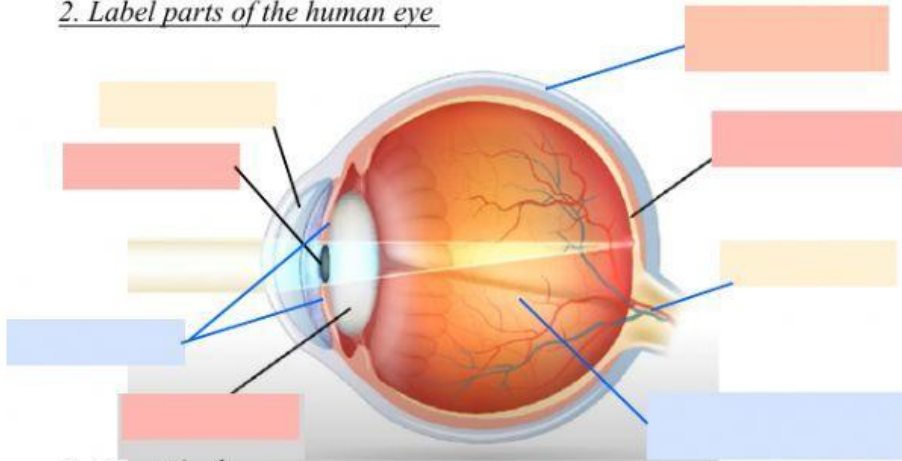
# SIGHT and the EYE



## 1. Choose the correct word:

**stimuli** is picked up by visual \_\_\_\_\_ located in the \_\_\_\_\_. **Eye** is the \_\_\_\_\_ of the sight. Visual \_\_\_\_\_ are stimulated by \_\_\_\_\_, **colour and movement**.

## 2. Label parts of the human eye



### WORD BANK

CORNEA	RETINA	LENS
OPTIC	IRIS	PUPIL
NERVE	VITREUS	SCLERA
	HUMOUR	

## 3. Complete the sentences. Use words offered in the Word Bank

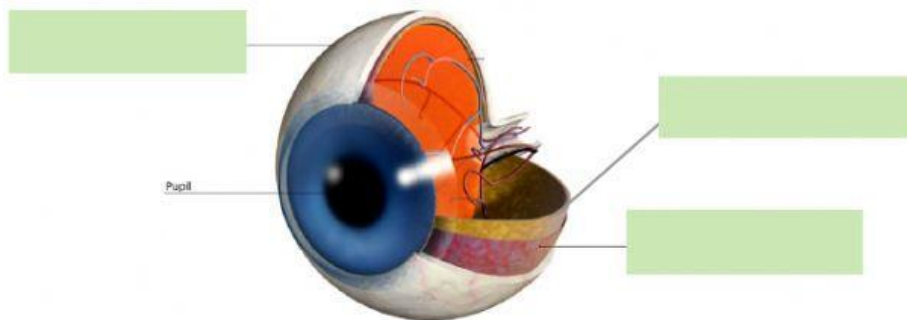
1. The part of the eye through which light enters is called the \_\_\_\_\_.
2. The \_\_\_\_\_ has six tiny muscles, which control the eye's movements. It's white.
3. The \_\_\_\_\_ covers the iris and the pupil and helps the eye to focus.
4. The part of the eye which sends signals to the brain is the \_\_\_\_\_.
5. Light is focused onto the retina by the \_\_\_\_\_.
6. The \_\_\_\_\_ is the part of the eye which changes light into the electric signals.
7. The \_\_\_\_\_ is the coloured part of the eye.
8. The \_\_\_\_\_ is a jelly-like substance that makes the eye round in shape

## 4. Complete the sentences:

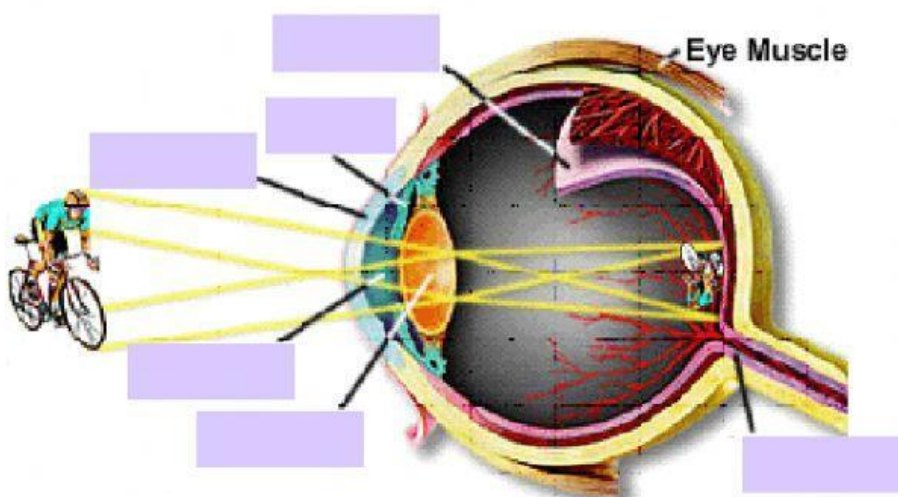
- a) The ..... is the front part of the sclera and it is transparent.
- b) The ..... nerve transports visual stimuli to the brain.
- c) The ..... is the coloured part of the eye.

- d) The part of the eye that is sensitive to light is the .....
- e) The part that regulates how much light gets into the eye is called .....

5. The eye is made of 3 layers. Describe:



6. Describe:



The image reflected on the retina is \_\_\_\_\_ and \_\_\_\_\_.

The most common vision disorder are \_\_\_\_\_ hyperopia, \_\_\_\_\_ and presbyopia.

The tactile reading and writing system for blind people is called \_\_\_\_\_.

the near-sighted disorder is called \_\_\_\_\_

the far-sighted disorder is called \_\_\_\_\_