

## Lesson 6.

1. Match the sentences (1-6) to the pictures (A-E).

Example:

*The main road in our city is very noisy.*



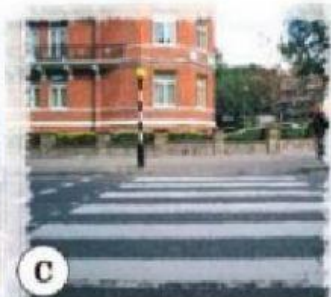
A

the main road



B

a road sign



C

a pedestrian crossing



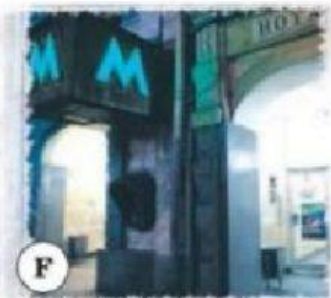
D

a pavement



E

the traffic lights



F

an underground  
station sign

1. You can go - is green
2. Where is the nearest station?
3. My aunt and uncle live on the road
4. Can you read that ?
5. At the do we go left, right or straight on ?
6. Walk on the , not on the pedestrian crossing.