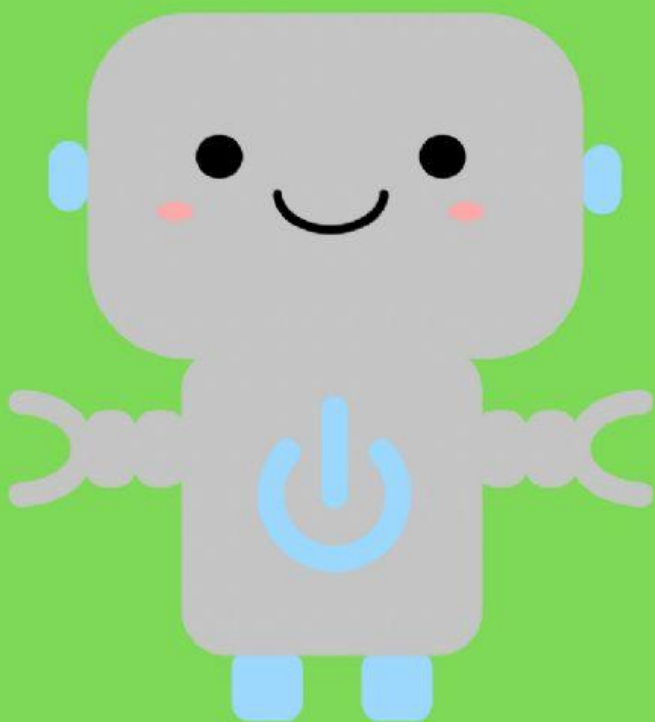


Resuelve la tabla del 3

3x



$1 \times 3 =$

$2 \times 3 =$

$3 \times 3 =$

$4 \times 3 =$

$5 \times 3 =$

$6 \times 3 =$

$7 \times 3 =$

$8 \times 3 =$

$9 \times 3 =$

$10 \times 3 =$

$11 \times 3 =$

$12 \times 3 =$