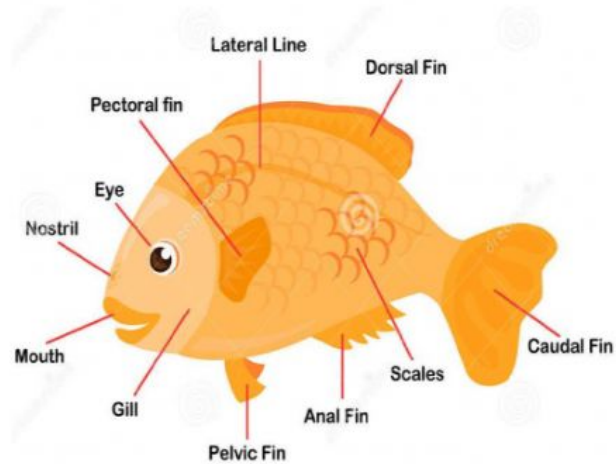


Fish Body Parts and Function

Fish live in water. They are covered with **scales** and have **fins**. **Fins** help them move through the water. The **scales** are protective coverings for the fish and help to prevent injury and disease. Fish breathe through their **gills** and **lay eggs**. Fish are cold-blooded animals. The

Nassau Grouper is one of the largest fish on the reef. It has five (5) dark brown bars on the body and, a dark band running from the snout, through the eye to the forehead side of the dorsal fin and a dark spot on the base of the tail fin.

It changes color depending on the environment it is in. This helps to hide it so it can ambush fish to eat. Humans are the predators that have the biggest impact on the grouper populations.



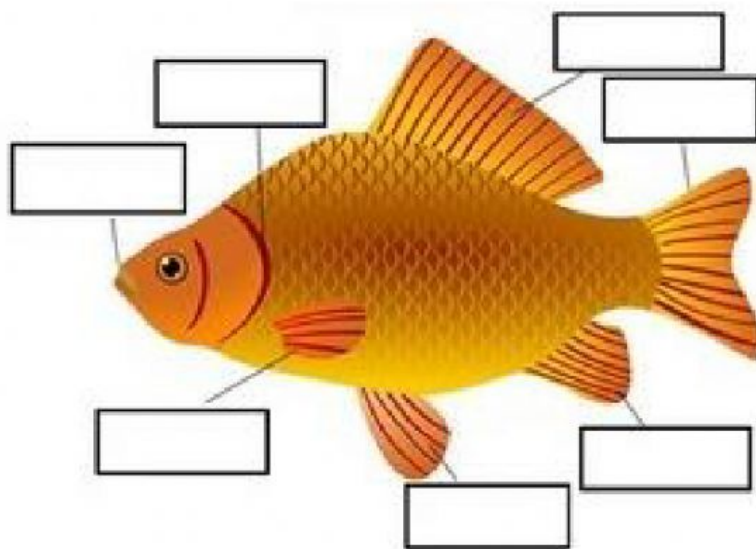
Name: _____

Date: _____

Match the function of the fish in Column A with its correct part from Column B.

_____ I help fish move through water.	A. Nassau Grouper
_____ Fish need me to breathe.	B. scales
_____ This protects the fish and prevents disease.	C. fins
_____ Fish live here.	D. gills
_____ A large fish found on the reef.	E. water

Use the word bank to label the parts of the fish below.



dorsal fin
pectoral fin
mouth
gill
pelvic fin
caudal fin
anal fin