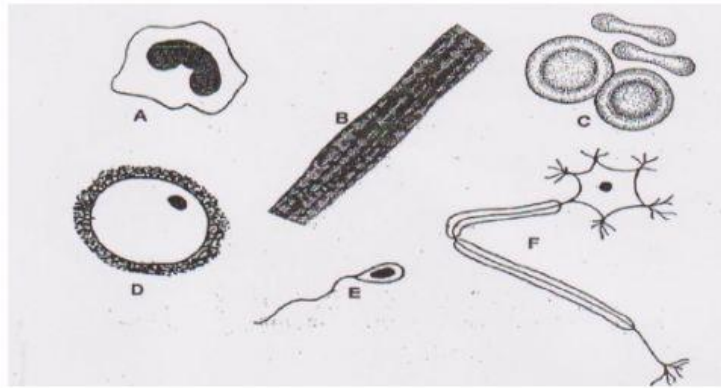


The diagram shows different cells in the human body.



a) What is a cell?(1)

b) Name the four cells in the diagram (4)

- A. _____
B. _____
C. _____
D. _____

c) Name the cell that lacks a nucleus.(1) _____

d) What is the function of the cell F? (1)

e) What are the names of the two reproductive cells (creates offspring)? (2)
