

# Listening Test

## Part 1: Listen and match

Richard

Person is the man skiing downhill, wearing green gloves.

Betty

Person is the girl standing on the ice.

Michael

Person is the boy got a strange hat, fallen over.

Katy

Person is the boy making the snowman, holding the snowman's arm.

Harry

Person is the blonde woman pulling the sledge.

Robert

Person is the man planting skis in the snow.

## Part 2: Listen and look.

### Visit to the museum

Will go by: (1) .....

Leave school at: (2) .....,

:Name of museum (3) ..... Museum

Will see: (4) .....

Must take: (5) .....

Must wear: (6) .....

## Part 3: Listen and write. Emma has a lot of things in her treasure box. Where did she find each thing?



ticket



pen



leaf



stamp



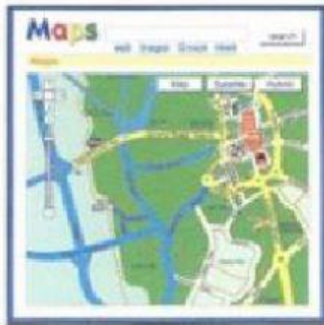
video



butterfly

Part 4: Listen and choose correct answers.

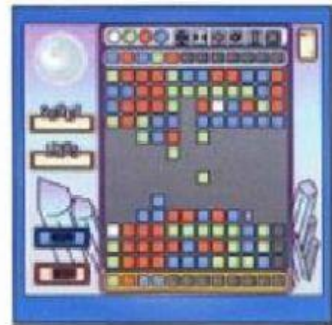
What is Jack looking at on the computer now?



A ☐



B ☐



C ☐

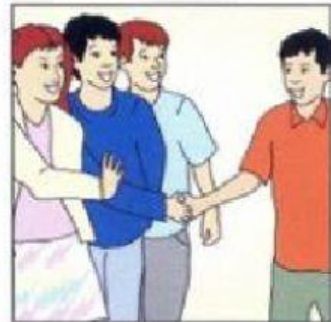
1 Why does the family want to go to London?



A ☐

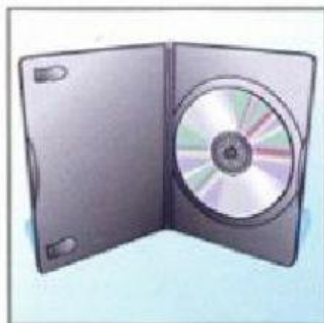


B ☐

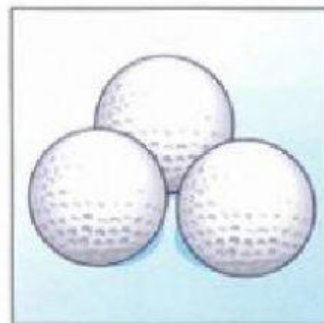


C ☐

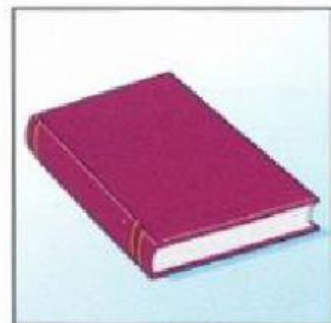
2 What will Jack and his mother buy?



A ☐



B ☐



C ☐

3 What must Jack find out about on the computer?



A ☐



B ☐



C ☐

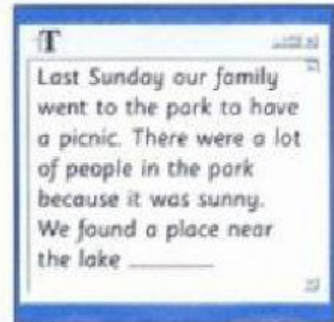
4 What can Jack's best friend do well on his computer?



A ☐



B ☐



C ☐

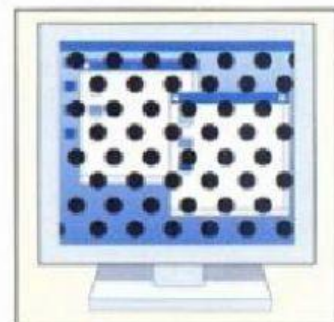
5 What's wrong with the computer now?



A ☐



B ☐



C ☐