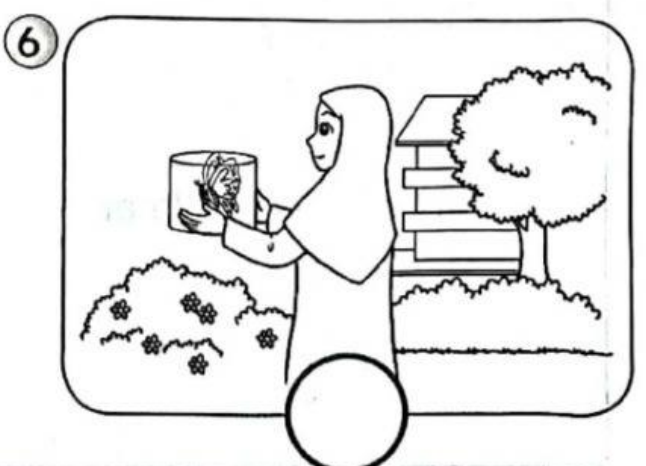
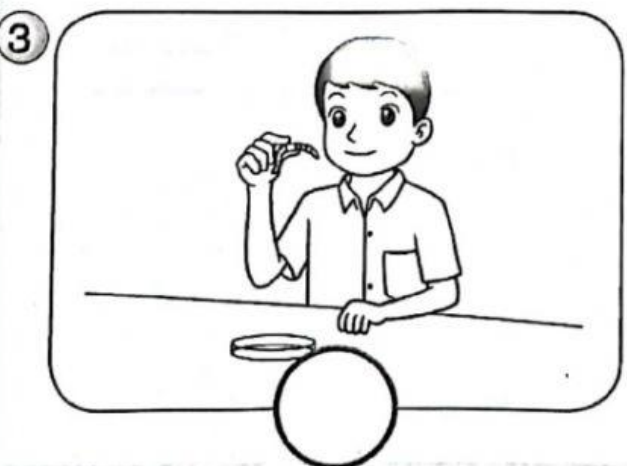
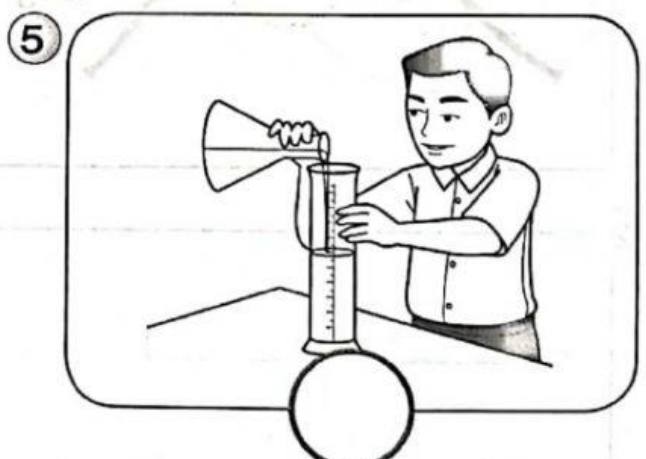
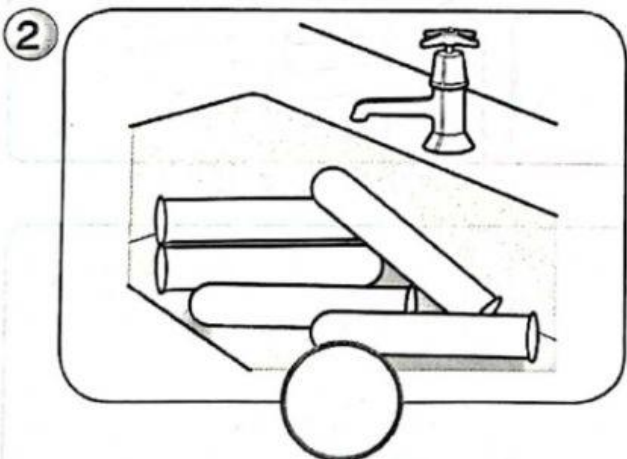
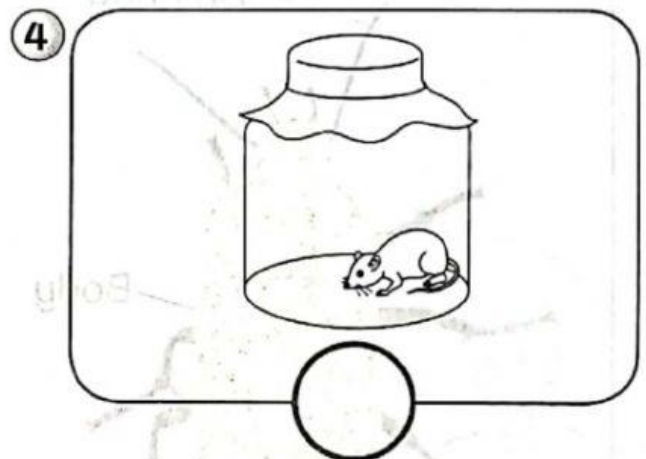


**Activity 7: Manipulative Skills – Using and Handling Apparatus, Science Substances and Specimens**

Click ( ✓ ) the correct way of using manipulative skills.



## Performance Level (PL):

- PL 1 Identify apparatus, science substances and specimens required for an activity.  
PL 2 Describe the use of science apparatus, substances and specimens required for an activity.  
PL 3 Use and handle science apparatus, substances and specimens required for an activity with the correct method.

The diagram below shows a pupil carrying out an activity in the science room. **PL 1 - PL 6**



(a) State **two** manipulative skills that are used in the activity above.

i. \_\_\_\_\_

ii. \_\_\_\_\_

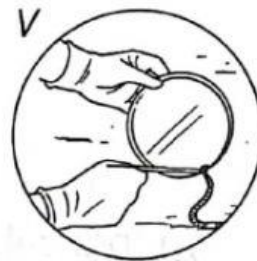
(b) What specimen is used in this activity?

\_\_\_\_\_

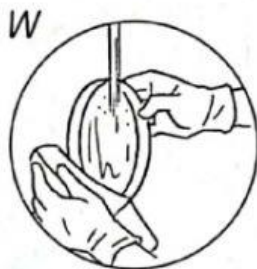
(c) Tick (✓) the correct way to handle the specimen.



- (d) What must the pupil do after completing this activity? Tick (✓) the correct action.

☐☐

- (e) What is the correct method of cleaning the apparatus? Tick (✓) the correct answer.

☐☐

- (f) The following information shows the actions done by three pupils after cleaning the apparatus.

- Sameer puts the beaker in the laboratory cabinet.
- Razif places the test tube on the table.

Who is storing the science apparatus and substances correctly?



Sameer



Razif