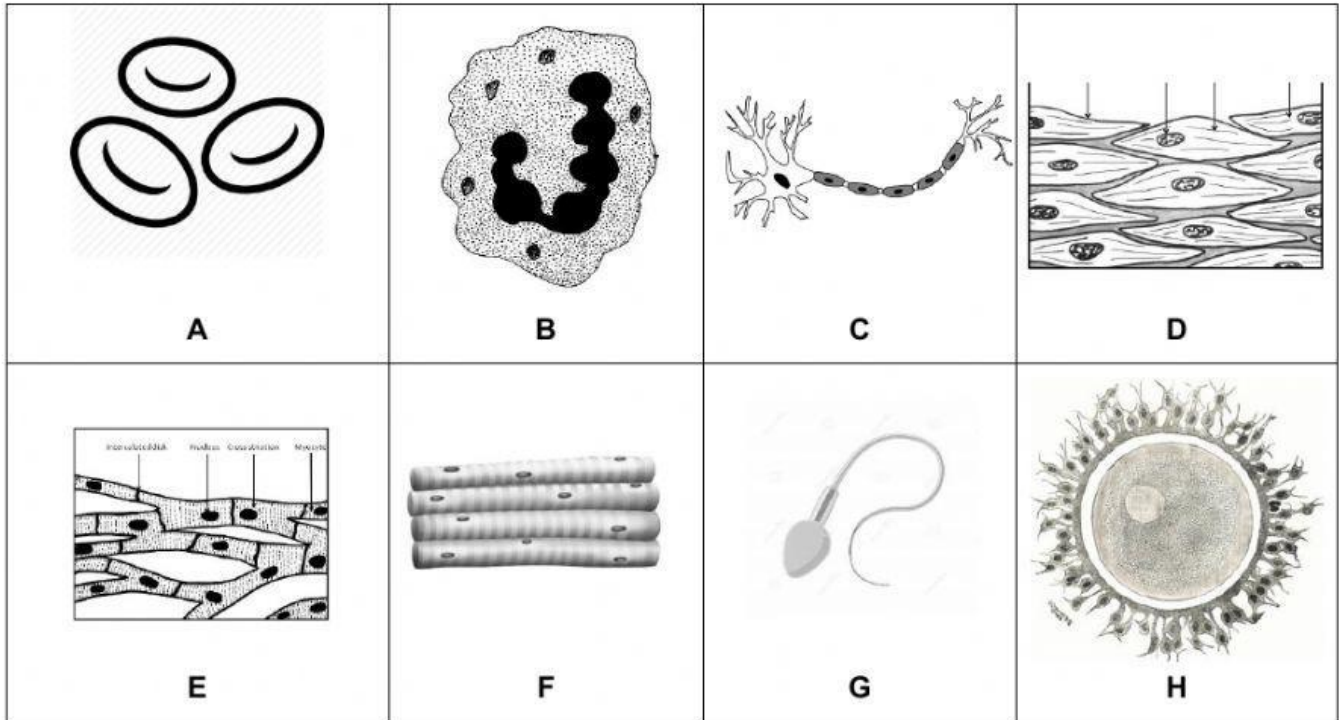


Name: _____ Date: _____ Grade: _____

Eight Mile Rock High School
Health Science
Specialized Animal Cells Review

Instructions: In the spaces provided, write the letter of the cell that best fits the description.



EXAMPLE: F Has more than one nucleus

1. _____ A muscle cell found in the heart
2. _____ Female reproductive cell
3. _____ Engulfs germs and bacteria
4. _____ Has a pigment called hemoglobin
5. _____ Found in the walls of internal organs such as the lungs
6. _____ Has a long axon and carries electrical messages
7. _____ Has many mitochondria to produce energy to swim
8. _____ Can be found in attached to bones