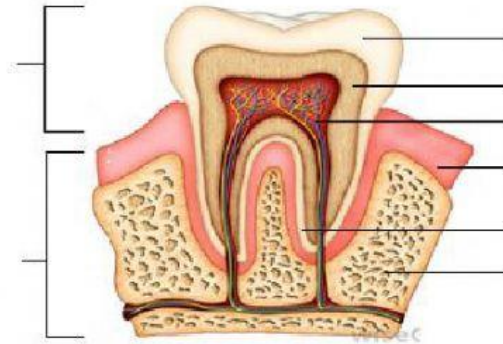


NAME: _____ DATE: _____

THE TEETH

1a. This an adult's tooth. What type of tooth is shown below? _____



2. Drag the following labels to the tooth above.

CROWN CEMENT DENTINE ENAMEL GUM JAWBONE PULP CAVITY ROOT

3a. How many teeth should an adult human have? _____ teeth

3b. How many teeth should a human child have? _____ teeth

4. Name the four types of human teeth.

5. The following pictures show ways to care for the teeth. Drag the correct label to each picture.

Eat crunchy fruits and veg	Floss between teeth	Visit dentist regularly	Brush with toothpaste
----------------------------	---------------------	-------------------------	-----------------------

6. A cavity can be caused in the way described below. Drag the numbers below to the correct steps in order below.

1	2	3	4	5	6
----------	----------	----------	----------	----------	----------

_____ The acids destroy the enamel and create a cavity.

_____ Sweet sticky food are eaten and not removed from teeth by brushing.

_____ More food is eaten and sticks in the cavity.

_____ Bacteria in the mouth feed on the food and produce acids as waste.

_____ The cycle continues until the cavity reaches the pulp and causes pain where the nerves are located.

_____ Bacteria produce more acids that make the cavity larger.