

8 Migration

Aims: Identifying how something has changed | Stressing words and syllables
Classifying: Labelling a diagram | Completing a table

Part 1: Vocabulary



1 Match the words 1–12 with their definitions a–l.

| | |
|---------------------------|--------------------------------------------------------------------------------------------------------------------------------------------------------------|
| 1 census (n) ____ | a all the qualities, traditions, or features of life of a country that have continued over many years and have been passed on from one generation to another |
| 2 civilian (n) ____ | b (of events) described or shown in the order in which they happened |
| 3 demography (n) ____ | c (of people or things) belonging to the country in which they are found, rather than coming there or being brought there from another country |
| 4 indigenous (adj) ____ | d a country which is controlled by a more powerful country |
| 5 migration (n) ____ | e the practice by which a powerful country directly controls less powerful countries and uses their resources to increase its own power and wealth |
| 6 overpopulation (n) ____ | f the study of the changes in numbers of births, deaths, marriages, and cases of disease in a community over a period of time |
| 7 heritage (n) ____ | g the problem that an area has when there are more people living there than can be supported properly |
| 8 monarch (n) ____ | h the movement (of people) from one place to another, especially in order to find work or to live somewhere for a short time |

| | |
|-------------------------------|----------------------------------------------------------------------------------------------------------------------------------------------------------------------------------------|
| 9 ancestors (n) ____ | i an official survey of the population of a country that is carried out in order to find out how many people live there and to obtain details of such things as people's ages and jobs |
| 10 chronologically (adv) ____ | j anyone who is not a member of the armed forces |
| 11 colony (n) ____ | k the people from whom you are descended |
| 12 colonialism (n) ____ | l the king, queen, emperor, or empress of a country |



8

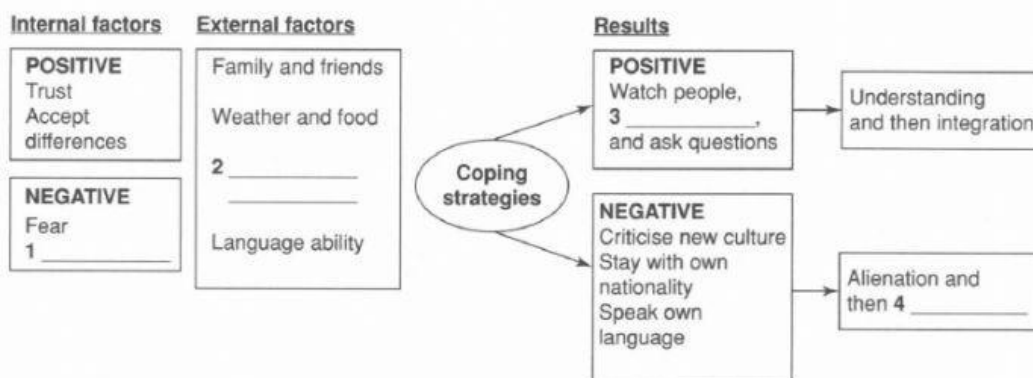
You are going to hear a lecturer talking about immigrants to Britain. Listen and complete the table. Write **NO MORE THAN THREE WORDS AND/OR A NUMBER** for each answer.

| Act and date | Reason for the act | Conditions to live in Britain |
|----------------------------------------------------|---------------------------------------------------------------------------------------------------------------|---------------------------------------------------------------------------------------------------------------|
| 1793 Aliens Act | control refugees from French Revolution | 1 _____ on arrival |
| 1844 Naturalisation Act 1870 Naturalisation Act | <ul style="list-style-type: none"> • know more about immigrants • regulate immigrants | <ul style="list-style-type: none"> • give personal information • resident for 2 _____ |
| 1914 Alien Registration Act | prevent 3 _____ | register with police speak English |
| 1948 4 _____ Act | encourage immigration for post war reconstruction | desire to work |
| 1962 Commonwealth Immigration Act | restrict Commonwealth immigrants | obtain 5 _____ |



6

The diagram below illustrates the same process as the one in Exercise 5, but in a different way. Study the diagram and then listen and complete the spaces. Write **NO MORE THAN THREE WORDS AND/OR A NUMBER** for each answer.



SECTION 4

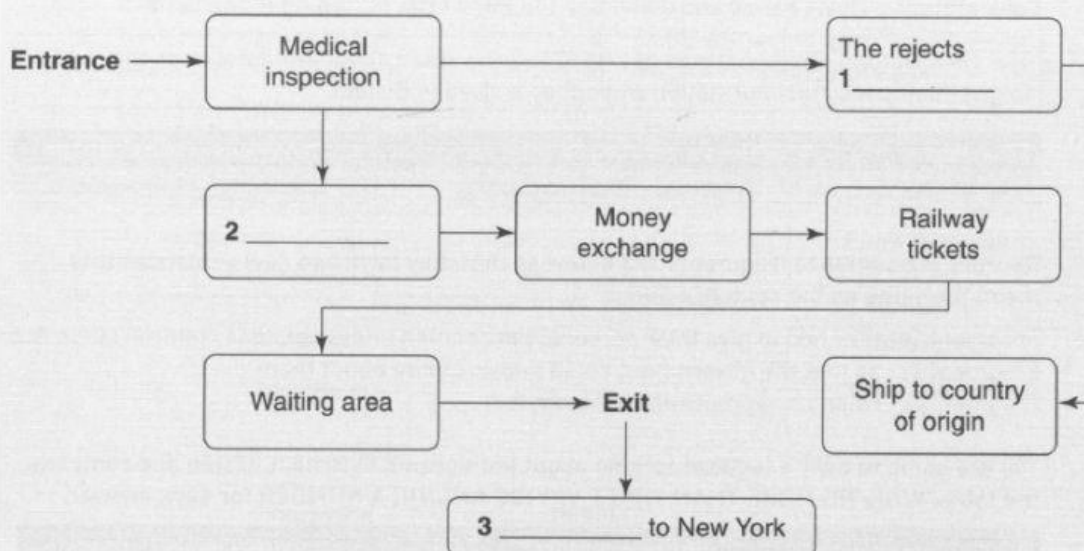
QUESTIONS 1-3



Label the diagram below.

Write **NO MORE THAN TWO WORDS AND/OR A NUMBER** for each answer.

Ellis Island immigration procedure



QUESTIONS 4-6



Match the areas of New York to the reasons affecting population change **A-D** in the box. Choose **ONE** option for each question 4-6.

- A** Political reasons
- B** Economic reasons
- C** Employment reasons
- D** Cultural reasons

- 4** Manhattan _____
- 5** Brooklyn _____
- 6** Queens _____

QUESTIONS 7–10



Complete the table below.

Write **NO MORE THAN TWO WORDS AND/OR A NUMBER** for each answer.

Brooklyn Case Study

| | 1900 | 1950 | 2000 |
|------------------------|-----------------------------|----------------------------------|-------------------------------------|
| Main economic activity | 7 _____ | Manufacturing | Financial services and construction |
| Population | 1.5 million | 2 million | 8 _____ |
| Transportation links | 9 _____ | Subway | Subway |
| Cultural Attractions | Coney Island amusement park | Development of the film industry | 10 _____ of Prospect Park |