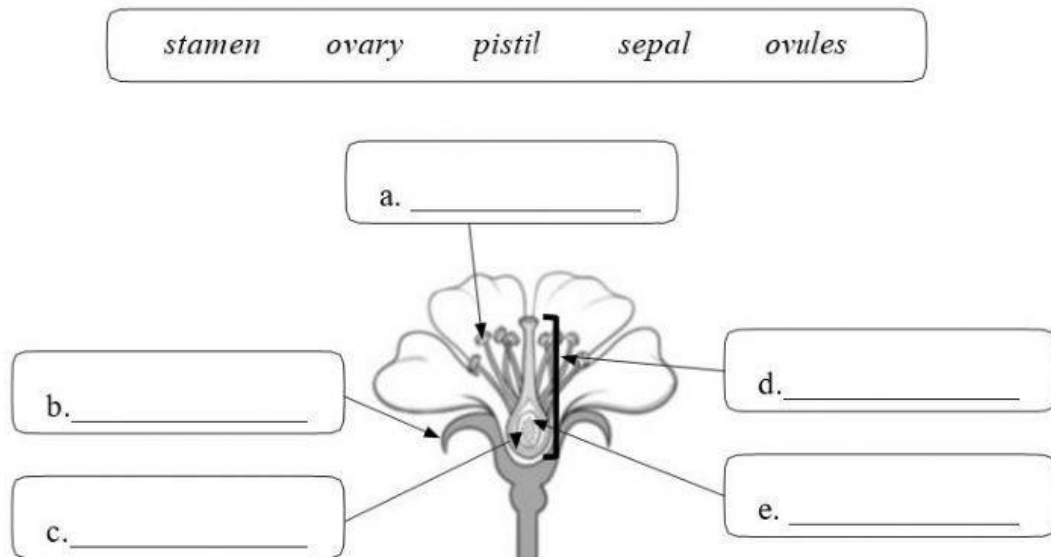


# PLANTS REPRODUCTION

1. **Label** the parts of the flower.



2. **Read** and **circle** the correct stage in sexual reproduction in angiosperms.

- |   |                                    |
|---|------------------------------------|
| a) Pollen travels from one plant to another plant:            | flowering / pollination            |
| b) A grain of pollen reaches an ovule in the ovary:           | fertilisation / germination        |
| c) The ovary develops into a fruit. The ovule becomes a seed: | Seed dispersal / fruit development |
| d) The seed reaches the ground and small roots grow down.     | germination / fertilisation        |

3. **Guess** the mystery words

- a) Plants make their own food. This process is known as \_\_\_\_\_
- b) Plants use their r\_\_\_\_\_ to take up w\_\_\_\_\_ and m\_\_\_\_\_
- c) Chlorophyll is used to trap s\_\_\_\_\_.
- d) In the stem, there are some tubes called v\_\_\_\_\_.
- d) Through their stomata, plants take in \_\_\_\_\_ and release \_\_\_\_\_
- e) The plants food is called e\_\_\_\_\_ s\_\_\_\_\_