

# SCHOOL subjects



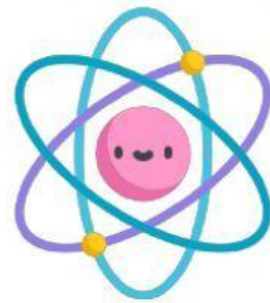
maths



P.E.



English











science



geography



history

	9:00	9:45	10:30	11:15
MONDAY				
TUESDAY				
WEDNESDAY				
THURSDAY				
FRIDAY				

● Listen and choose:



● Read and write:

What day is geography at half past ten?

What day is P.E. at quarter past eleven?

What day is history at nine o'clock?

What day is English at quarter past eleven?

What day is science at quarter to ten?