

Ratio in Three Ways: Part to Part Level 1

Directions: Point to or draw a line from the picture to the correct ratios.

- 1) books to pens



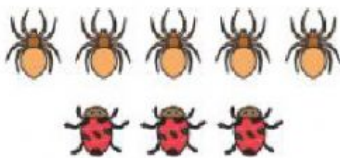
5 to 3	5:3
$5/3$	

- 2) pumpkins to cabbages



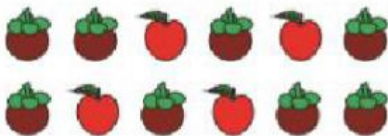
6 to 5	6:5
$6/5$	

- 3) spiders to ladybugs



2 to 6	2:6
$2/6$	

- 4) apples to mangosteens



2 to 7	2:7
$2/7$	

- 5) snow cones to chocolates



4 to 8	4:8
$4/8$	