

TRANSPORT

Practice your pronunciation. Say the words.

1 PUBLIC TRANSPORT AND VEHICLES

a Match the words and photos.

- ☐ coach* /kəʊtʃ/
- ☐ ferry /ˈferi/
- ☐ lorry /ˈlɒri/ (AmE truck)
- ☐ motorbike /ˈməʊtəbaɪk/
- ☐ motorway /ˈməʊtəweɪ/ (AmE freeway)
- ☐ scooter /ˈskuːtə/
- ☐ tram /træm/
- ☐ the Underground /ˈʌndəgraʊnd/ (AmE subway)
- ☒ 1 van /væn/

* coach also means part of a train

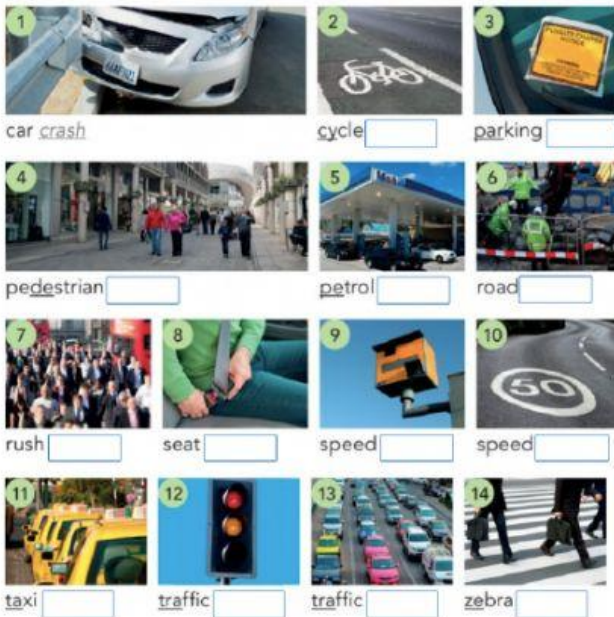
b 3.2 Listen and check.



2 ON THE ROAD

a Complete the compound nouns.

belt /belt/ camera /ˈkæməɾə/ crash /kræʃ/ crossing /ˈkrosɪŋ/
fine /faɪn/ hour /aʊə/ jam /dʒæm/ lane /leɪn/ lights /laɪts/
limit /lɪmɪt/ rank /ræŋk/ station /ˈsteɪʃn/ works /wɜːks/
zone /zəʊn/



b 3.3 Listen and check.

4 PHRASAL VERBS

a Complete the phrasal verbs with a word from the list.

end look pick run set

- 1 We off at 7.00 in the morning to try to avoid the traffic.
- 2 I arrive at 8.15. Do you think you could me up at the station? (opp drop off)
- 3 Always check the address you put in your satnav or you may up in the wrong place.
- 4 We're going to out of petrol soon. Let's stop at the next petrol station.
- 5 (or Watch) out! You're going to crash!

b 3.4 Listen and check.

p.26