

Name: \_\_\_\_\_ Grade: \_\_\_\_\_ Date: \_\_\_\_\_

### UNIT TEST

#### CLASSIFICATION OF PLANTS

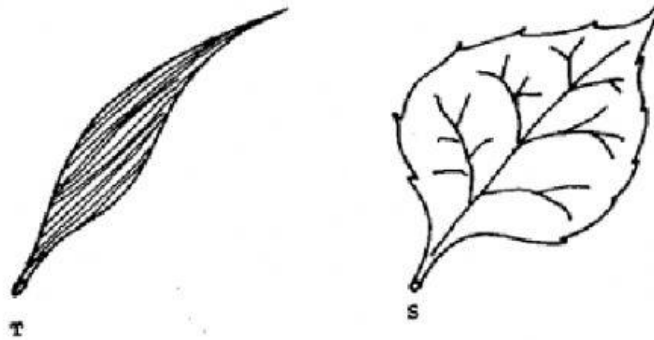
**INSTRUCTIONS:** Choose the letter that best answers the questions below.

1. Which statement is true about self-pollination?
  - a. Fusion of pollen grains from a flower with the ovum of a different flower on another plant
  - b. Fusion of pollen grains from a flower with the ovum of the same flower on the same plant
  - c. Transfer of pollen grains from the anthers of a flower to the stigma of a different flower on another plant
  - d. Transfer of pollen grains from the anthers of a flower to the stigma of the same flower on the same plant
  
2. Which statement is true about insect pollinated plants?
  - a. They have feathery stigmas
  - b. They have conspicuous petals
  - c. They have long protruding stigmas
  - d. They have stamens hanging outside the flower
  
3. Which structure is the male reproductive part of the plant?
  - a. Petal
  - b. Pistil
  - c. Sepal
  - d. Stamen
  
4. The carpal of a flower consists of:
  - a. Anthers and filaments
  - b. Stigma, style, and ovary
  - c. Anthers, stigma, and style
  - d. Petals, sepals and stamen

5. Which is the first to develop?
  - a. Leaves
  - b. Plumule
  - c. Radicle
  - d. Root hairs
  
6. Which process requires optimum conditions for growth of seeds and spore?
  - a. Gestation
  - b. Germination
  - c. Fertilization
  - d. Photosynthesis
  
7. Which group is classified as simple plants?
  - a. Algae
  - b. Bacteria
  - c. Ferns
  - d. Mosses
  
8. Which gas is produced as a by-product of photosynthesis?
  - a. Carbon dioxide
  - b. Oxygen
  - c. Nitrogen
  - d. Water vapor
  
9. Why do flowering plants need light?
  - a. To absorb water
  - b. To produce starch
  - c. To help pollinate flowers
  - d. To reduce water loss
  
10. What is the major function of leaves?
  - a. Absorption
  - b. Fertilization
  - c. Starch production
  - d. Protection

**INSTRUCTIONS:** Answer ALL parts of the short answer.

11. Study the two leaves before answering the parts (i) - (ii)



a. Which leaf is from a monocotyledon plant? (1)

---

b. What are two differences between the leaves of monocotyledons and dicotyledons? (2)

---

---

c. What is one difference between the seeds of monocotyledons and dicotyledons? (1)

---

---

d. List two examples of monocotyledons and dicotyledons (4)

Monocotyledon \_\_\_\_\_ and \_\_\_\_\_

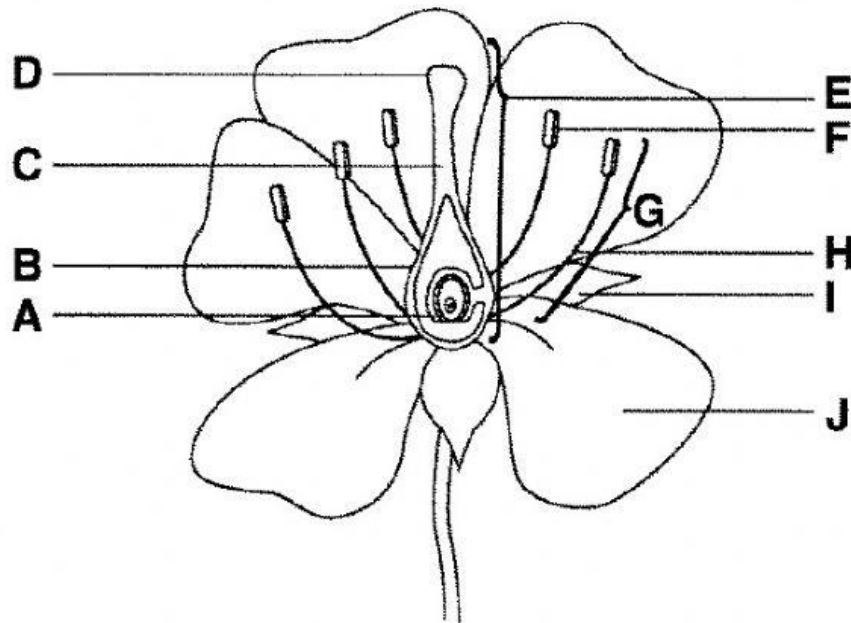
Dicotyledon \_\_\_\_\_ and \_\_\_\_\_

e. What is the main function of the leaf? (2)

---

---

12. **INSTRUCTIONS:** Answer ALL parts of the short answer.



a. Label the following parts of the flower A-J (5)

- A \_\_\_\_\_
- B \_\_\_\_\_
- C \_\_\_\_\_
- D \_\_\_\_\_
- E \_\_\_\_\_
- F \_\_\_\_\_
- G \_\_\_\_\_
- H \_\_\_\_\_
- I \_\_\_\_\_
- J \_\_\_\_\_

b. What is the difference between pollination and fertilization? (2)

---

---

---

---

c. Some flowers are not brightly colored at all, but have a very pungent odor that smells like rotting meat. How do you think these flowers are pollinated? (1)

---

---

d. Why are flowers brightly colored? (1)

---

---

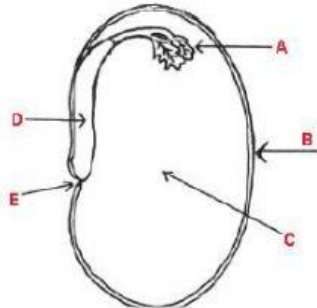
e. What is one difference between wind pollinated plants and insect pollinated plants? (1)

---

---

---

13. **INSTRUCTIONS:** Answer ALL parts of the question



a. Label the part A-D (4)

A \_\_\_\_\_

B \_\_\_\_\_

C \_\_\_\_\_

D \_\_\_\_\_

b. Provide the letter of the structure that would be responsible for photosynthesis. (1)

\_\_\_\_\_

c. Define germination. (2)

\_\_\_\_\_

\_\_\_\_\_

d. Provide THREE conditions necessary for germination. (3)

\_\_\_\_\_

\_\_\_\_\_

TOTAL MARKS: \_\_\_\_\_ / 40