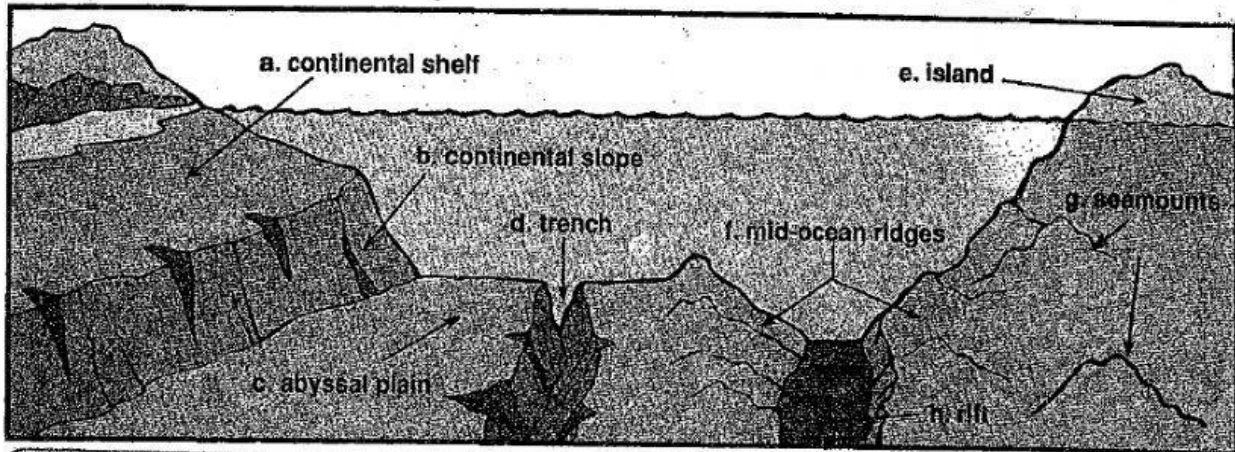


# Features of the Ocean Floor

Name \_\_\_\_\_  
# \_\_\_\_\_

**Directions:** Each flipper describes an ocean-floor feature. Use the diagram to help you decide which feature is being described. Then write its corresponding letter on the flipper.



1. \_\_\_\_\_ a chain of mountains that runs through the three major oceans (most stand about 5,000 feet above the seafloor)

5. \_\_\_\_\_ a steep-sided valley at the center of a mid-ocean ridge

2. \_\_\_\_\_ a submerged area that rims the land, beginning at the shoreline and gently sloping underwater to an average depth of about 430 feet

6. \_\_\_\_\_ a long, narrow, steep-sided valley that forms the deepest parts of the ocean

3. \_\_\_\_\_ a mountain that breaks through the surface of the water

7. \_\_\_\_\_ a steep drop-off from the continental shelf that plunges to depths of 2 1/4 miles

4. \_\_\_\_\_ a flat area of the ocean floor, covered with sand, mud, and plant and animal remains

8. \_\_\_\_\_ underwater mountains formed by erupting volcanoes

