

Aim Vocabulary practice; Listening practice; Speaking practice
Level Beginner
Material Video Play Time: 2:12 , Worksheets Approximate Time: 25 mins

Basic English Dialogs

DAILY ACTIVITIES

MORNINGS:
GETTING UP



ALL STUDENTS ARE REQUIRED TO WATCH THE VIDEO ABOUT TRAVEL AND THEN ANSWER THE PBD QUESTIONS BELOW



DIALOG. 1



John

Interviewer: What time do you get up in the mornings, John?

John: I _____ get up very early!

Interviewer: Yes, but _____ early?

John: At about five _____ or six!

usually

o'clock

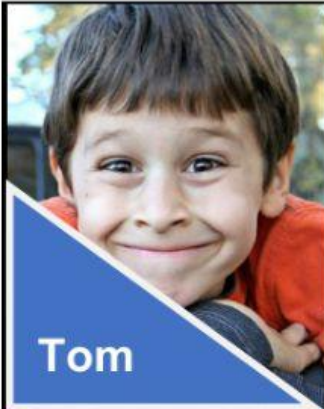
how

Aim Vocabulary practice; Listening practice; Speaking practice

Level Beginner

Material Video Play Time: 2:12 , Worksheets Approximate Time: 25 mins

DIALOG. 2



Interviewer: Do you get up early, Tom?

Tom: _____, but not too early.

Interviewer: So, at what time, _____?

Tom: My mom sometimes _____ at seven.

gets me up

exactly

sometimes

DIALOG. 3



Interviewer: What time do you do you get up, Julia?

Julia: Usually between nine and _____.

Interviewer: Why do you get up so _____?

Julia: Well, I _____ very late.

ten

late

go to bed