

## Part 1

## Questions 1 – 8

Read the text carefully in each question. Choose the best answer A, B or C.

For each question, mark the correct answer A, B or C on your answer sheet.



1. The host for the birthday party is  
 A Laila.  
 B Ain  
 C Elaine.

### Food Review : Tanjung Café

Local food restaurant that caters for breakfast, lunch and dinner.

- ☛ A variety of choices
- ☛ Tasty dishes
- ☛ Great ambience
- ☛ Reasonably priced

\*\*\*\*

Cater for small events in Dahlia Room

2. Tanjung Café provides  
 A various dishes for all meals.  
 B catering services for weddings.  
 C boring and dull surrounding.



3. Siti is taking part in a programme to  
 A teach people about cleanliness.  
 B learn about the environment.  
 C clear up rubbish at a beach.

Bentong – Mon. There was a traffic jam early this morning due to an accident. Police were at the scene to control the traffic. The drivers of the vehicles cheated death. The vehicles however were totally wrecked.

4. From the news report, we know that the drivers were  
 A alive.  
 B dead.  
 C injured.

**COME AND JOIN OUR  
NATURE CAMP!**

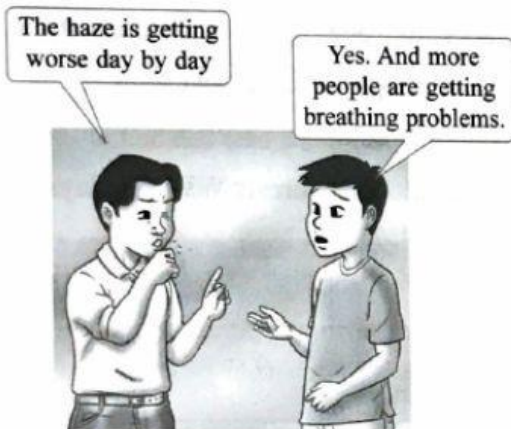
**TWO-DAY CAMP AT SG LEPUH WATERFALLS**

**ACTIVITIES:**  
**FISHING, SWIMMING, TREKKING, CAMPING**

**REGISTER EARLY! LIMITED PLACES!**

**Free T-shirt and  
cap for 10 early  
birds**

5. If we register early for the programme, we can
- A go fishing.
  - B get a t-shirt and a cap.
  - C camp in a suitable place.



6. From the conversation, we know that the people are affected by \_\_\_\_\_ pollution.
- A air.
  - B water.
  - C sound.

### INTERNATIONAL DEPARTURE

Time	Airlines	Flight No	Destination	Gate	Remark
1330	Malaysia Airlines	MH 391	Sydney	-	DEPARTED
1440	Saudi Airlines	SD 220	Jeddah	12	GATE CLOSED
1520	Malaysia Airlines	MH391	Bandung	10	CALLING
1700	Japan Airlines	JT 872	Tokyo	14	RETIMED

7. Looking at the electronic board, a person is able to know
- A the time he/she will arrive.
  - B when his/her flight is delayed.
  - C whether he/she can still get a ticket.

### Prime Run

Run and Live Well  
 Sunday: 22nd July 2020  
 Dataran Merdeka  
 20km/10km/5km  
 Registration ends on  
 10th July 2020  
 Fee :RM 30.00



#### Contact:

Ms. Chan : 011 112 2343

Mr Ramli : 012 343 2332

Organised by Ministry of Health and The Times

8. Participants of Prime Run need to
- A run in all the categories.
  - B pay some money to take part.
  - C contact the organiser on the day of the event.



## Part 2

## Questions 9 to 16

Read the text below and correct the underlined errors.

For each question, write the correct word in the space provided on your answer sheet.

### The Rainforests

Malaysia boasts many forests among which (0) were the rainforests, said to be one of (9) an oldest rainforests in the world. The rainforests of Southeast Asia are also (10) know to be the most biologically diverse. Tropical forests are important for the continual existence of human beings. (11) It help to regulate the flow of water into our rivers and moderate climatic change. Forests are also rich (12) on various flora and fauna. As one of the most productive type of forests in the world, they can (13) provided many things for us. We get timber for all kinds of uses, rattan and bamboo, wild fruits (14) or medicinal plants. The animals living in the forests are (15) importance, too.

These forests have been made National Parks as one way of conservation. (16) Furthermore, deforestation, illegal removal of forest products as well as public encroachment continue to be a problem to our still developing country.

(Adapted from Forests WWF-Malaysia)

[8 marks]

Example:

0	are
---	-----

9	
10	
11	
12	
13	
14	
15	
16	