



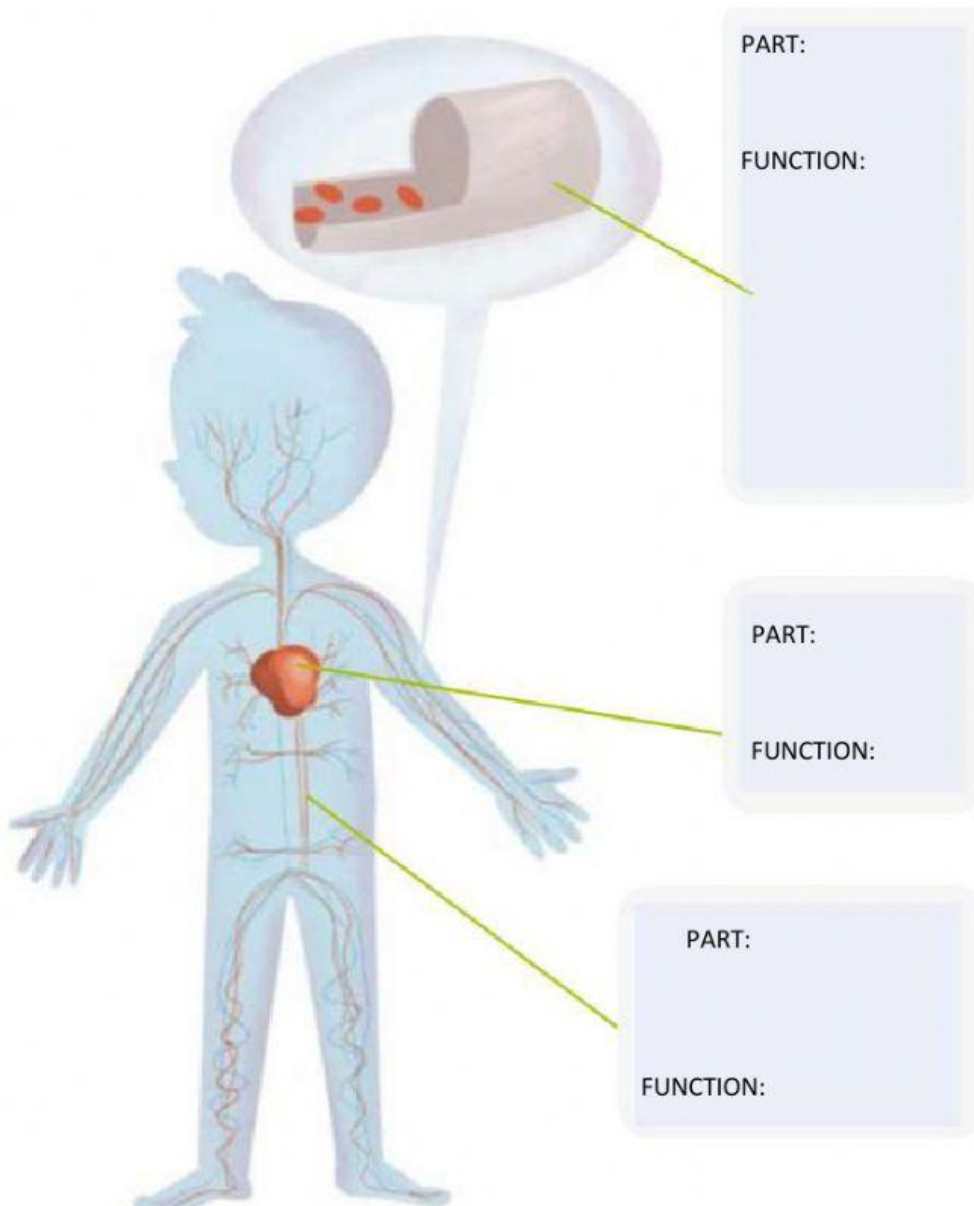
**MATH TEST
6TH GRADE
TERM 1 PART 1**

School year: 201-2022

Date:

Name:

I. Label the parts on the diagram. Write their functions.



Heart:

Blood vessels:

travels through
the organism to
transport
nutrients,
oxygen, and
waste

pumps blood
through the
organism

Blood:

transport
blood to all
parts of the
body.

II. Match to complete the sentences.

- | | |
|---|--|
| a) The circulatory system | components of blood. |
| b) Red blood cells | transports water, nutrients, and waste through the organism. |
| c) White blood cells | defend the organism against illnesses. |
| d) The formed elements are | white blood cells, red blood cells, and platelets |
| e) Plasma and formed elements are | give blood its color and transport oxygen |
| f) A plug or clot is what stops bleeding and the cells responsible for forming it are | platelets. |

III. Choose the correct answer.

1. Which ones are illnesses or diseases that can affect the circulatory system?

- | | | | |
|------------------------------|-----------------------------|---------------------------------------|----------------------------------|
| a) Eczema and skin breakouts | b) Influenza and laryngitis | c) Heart attack, and high cholesterol | d) Asthma, allergies, pneumonia. |
|------------------------------|-----------------------------|---------------------------------------|----------------------------------|

2. What can you do to keep your circulatory system healthy?

- | | | | |
|--------------------------------------|--|---|---|
| a) Eat junk food and plenty of water | b) Avoid sugar and watch tv all the time | c) Eat healthy, do exercise, and drink water. | d) Visit the doctor every two years to get checked. |
|--------------------------------------|--|---|---|

3. What are examples of blood vessels?

- | | | | |
|-------------------------------|------------------------------------|------------------------------------|-------------------------------------|
| a) Blood, arteries, and veins | b) Veins, alveoli, and white cells | c) Carbon dioxide, air, and oxygen | d) arteries, capillaries, and veins |
|-------------------------------|------------------------------------|------------------------------------|-------------------------------------|

- IV. Write the numbers from 1 to 4 to put the steps of the air's journey into the body in the right sequence. (Being 1 what happens first and 4 what happens last).






The air gets into the lungs.

The air passes through the tubes.

The air enters the body and harmful substances are removed.

The gas exchange happens: the oxygen enters the blood and carbon dioxide exits the body.

- V. Drag the name and match the pictures to their definition.

Name:	Name:	Name:	Name:	Name:
				

WORD BANK				
Lungs	Bronchial tubes	Nasal passage	Trachea	Alveoli

DEFINITIONS				
Large duct that directs to the bronchial tubes.	Organ where the air enters the body.	Sacs where gas exchange occurs.	Tubes that enter the lungs to the bronchi.	Organ that fills with air during inhalation.

VI. Choose the correct answers to complete the sentences.

- Gas exchange consists of **cabon dioxide / oxygen** entering the blood and **cabon dioxide / oxygen** leaving it.
- The respiratory system is formed by two types of organs: **aleveoli / lungs** and **oxygen / respiratory airways**.
- The process that lets oxygen enters the lungs is called: **exhalation / inhalation** ,
- The process in which our body expels carbon dioxide as waste is:
exhalation / inhalation

The gas exchange occurs in the **heart and veins / alveoli and capillaries**

GOOD LUCK!

