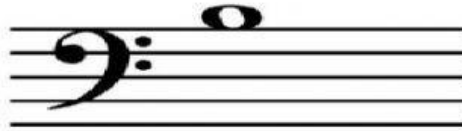


The Alto Clef (Transposing)

Instructions: Choose the note that is the same pitch as the note given in the picture.

1



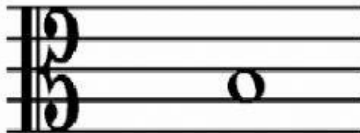
a



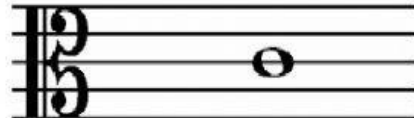
b



c



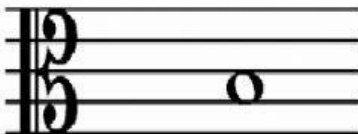
d



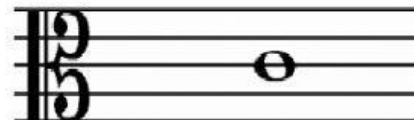
2



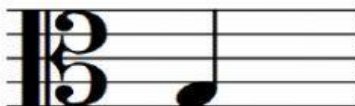
a



b



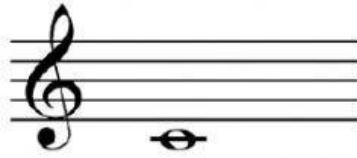
c



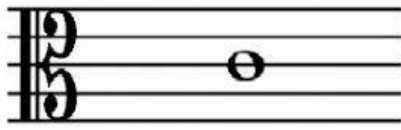
d



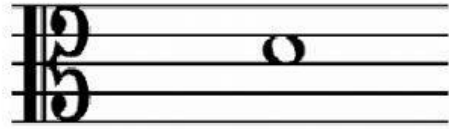
3



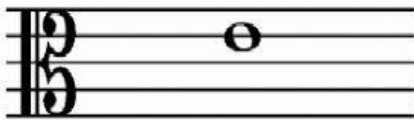
a



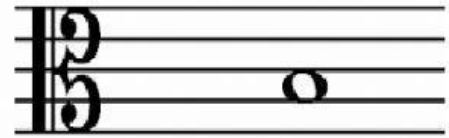
b



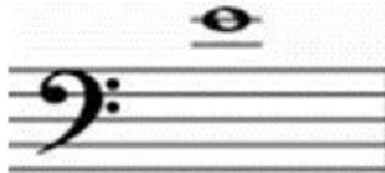
c



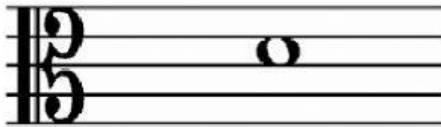
d



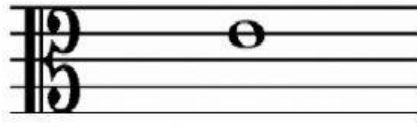
4



a



b



c



d



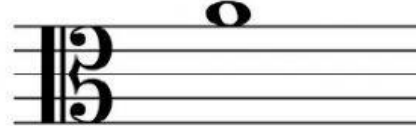
5



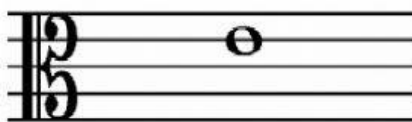
a



b



c



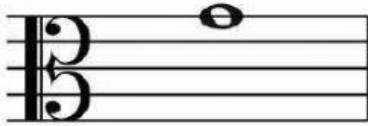
d



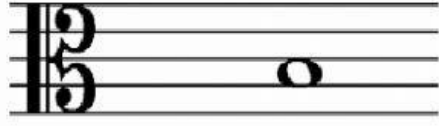
6



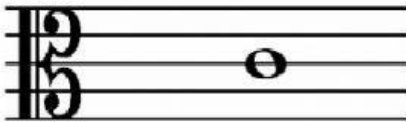
a



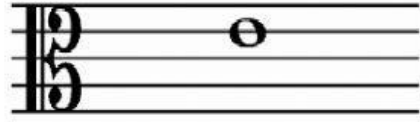
b



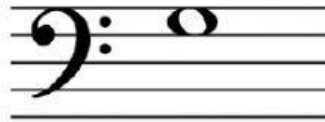
c



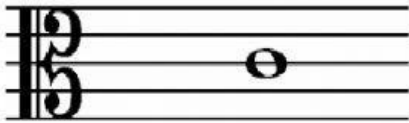
d



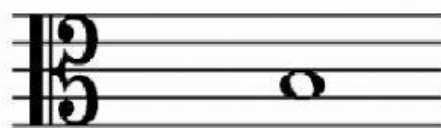
7



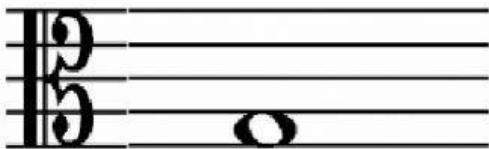
a



b



c



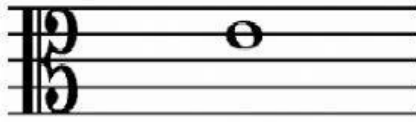
d



8



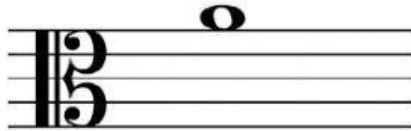
a



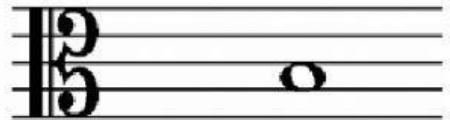
b



c



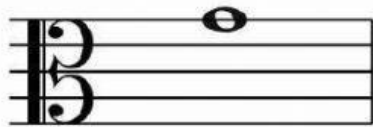
d



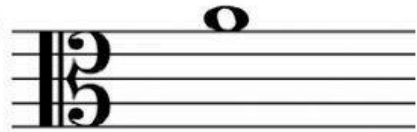
9



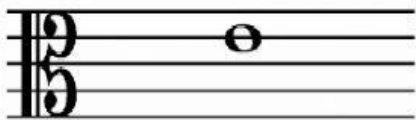
a



b



c



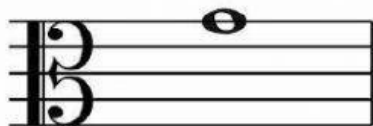
d



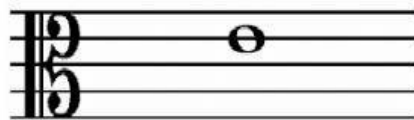
10



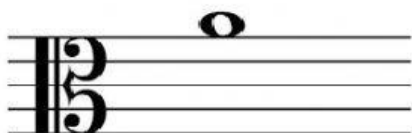
a



b



c



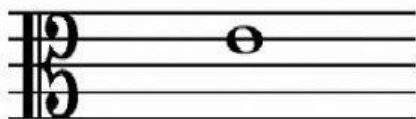
d



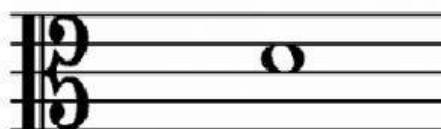
11



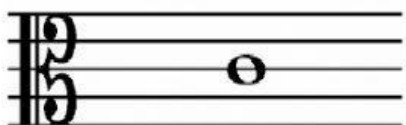
a



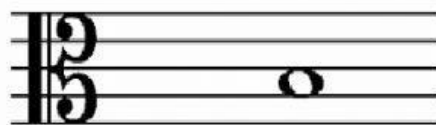
b



c



d



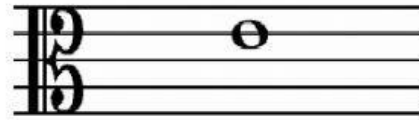
12



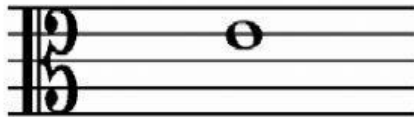
a



b



c



d

