

Reading Homework:

We've all heard about global warming, right? The rising Earth temperature has caused ice-covered areas on our planet to melt away. The disappearance of ice is a major threat to animals like penguins. Less ice means less habitat and less food for penguins. Penguin populations have decreased by 80% in some areas of the Southern hemisphere, and most scientists agree that climate change is the primary cause of this grim statistic.



For instance, African penguins eat sardines and anchovies that follow a cold current of water. As the ocean heats up, their food source is moving further away from their habitat. If the current continues to move, the penguins will end up losing their food source, as they can only swim about 25 miles from their home.

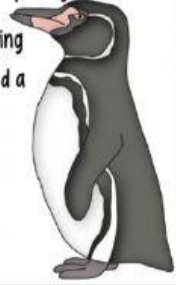
We need to unite to protect endangered animals like penguins, by working together to stop global warming. Walk or ride your bike instead of

driving short distances. Share rides whenever possible. Write to lawmakers requesting that they create laws that protect the environment. We need to act *now* to prevent penguins and other endangered animals from becoming a part of the Earth's past.



What was the author's purpose for writing the above passage?

- A. to explain how the Earth's environment is changing
- B. to persuade readers to help African penguins find a new food source before they become extinct
- C. to persuade readers to help save endangered animals by working to stop global warming
- D. to explain how laws are written to help protect the environment



Writing Homework:

Directions: Write a story (at least 5 complete sentences) that takes place on another planet.

Math Homework:

1. Which standard form represents four million, nine hundred thirty-seven thousand.

a. 4,900,307	b. 4,903,007
c. 4,903,700	d. 4,937,000

2. Order the whole numbers from least to greatest.

Least	<input type="text"/>	1,214,057
	<input type="text"/>	1,241,705
	<input type="text"/>	1,214,507
Greatest	<input type="text"/>	1,241,075

3. Select three numbers that could be rounded to 1,290,000?

1,287,621	1,282,145	1,291,463
1,275,104	1,294,050	1,281,035

4. Estimate and solve for the difference of 46,782 and 14,209.

a. 20,000	b. 30,000
c. 40,000	d. 50,000

5. Solve for the sum of 451,945 and 26,474.

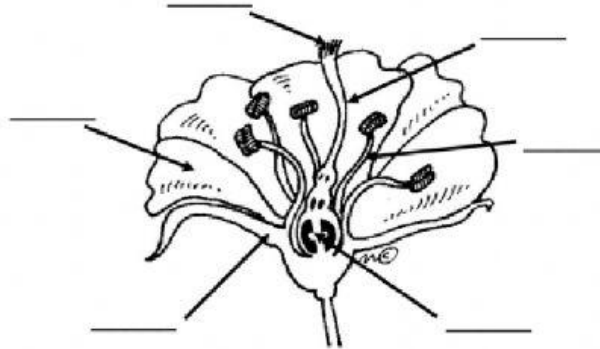
a. 478,419	b. 530,377
c. 531,367	d. 769,633

Science Homework:

Use the letters in the word bank to label the parts of the flower.

Word Bank:

- A - seed
- B - petal
- C - pistil
- D - sepal
- E - stamen
- F - stigma



A bird's heart is an _____ (internal/external) structure and
one of its feathers is an _____ (internal/external) structure.