

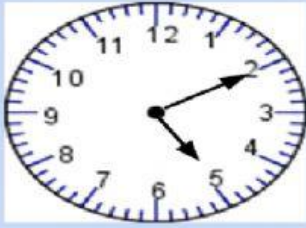
Time Past The Hour

We say that time is past the hour when the minute hand (long hand) is between 12 and 6.

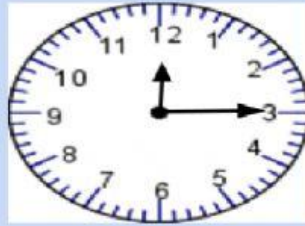


TIME BY FIVE MINUTE INTERVALS

Write the time shown on the clocks.



ten minutes past five



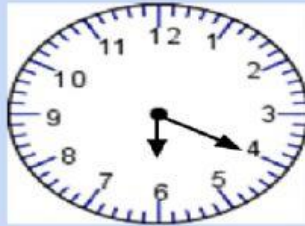
Write here



Write here



Write here



Write here



Write here

WRITE THE FOLLOWING IN DIGITAL FORM

Example:

twenty minutes past two -

a. one o' clock -

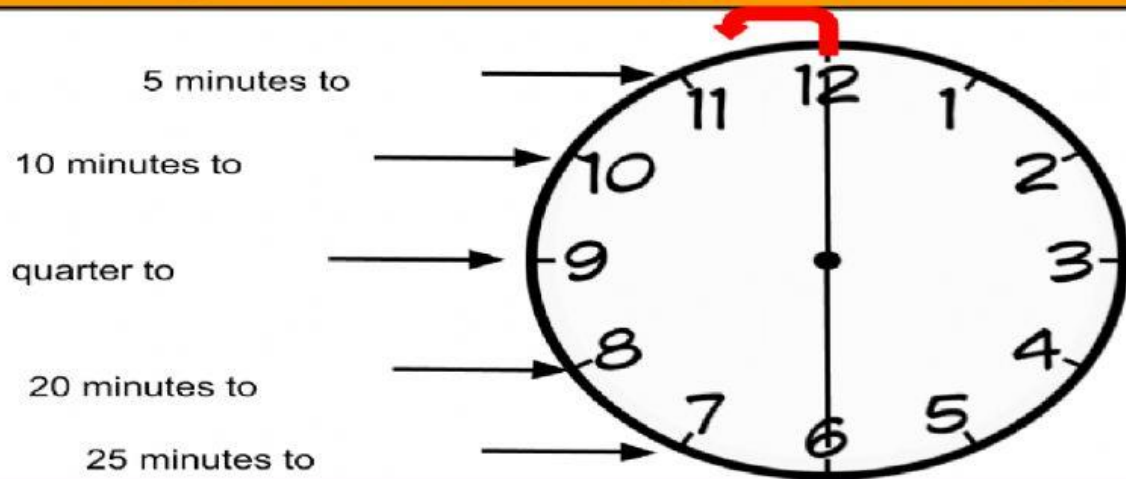
b. twenty five minutes past seven -

c. half past three -

d. ten minutes past four -

e. thirty minutes past five -

TELLING TIME - TO THE HOUR



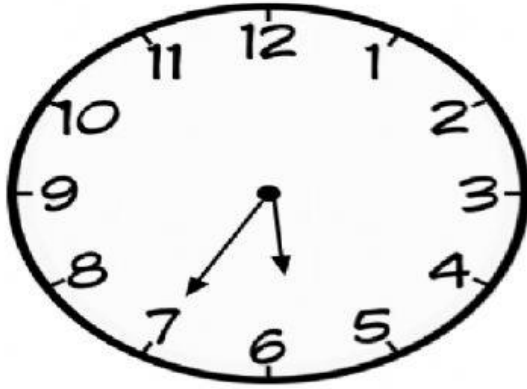
REMINDERS -

15 (fifteen) minutes to is **‘quarter to’**

Count by **5’s** from **12** in the **anticlockwise direction** ↶ for the part of the clock

face showing ‘to the hour’

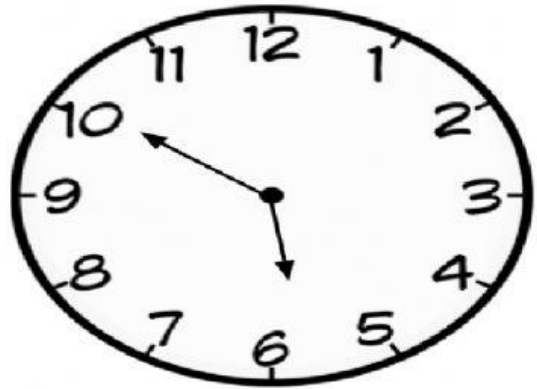
TIME TO THE HOUR



Clock C shows:

twenty-five minutes to six
OR

5: 35



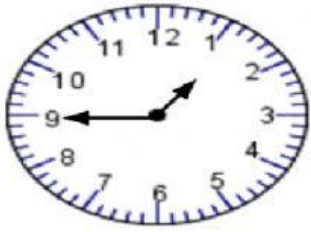
Clock D shows:

Ten minutes to six
OR

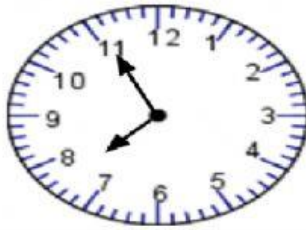
 **LIVEWORKSHEETS**

TELLING TIME TO THE HOUR - PRACTICE

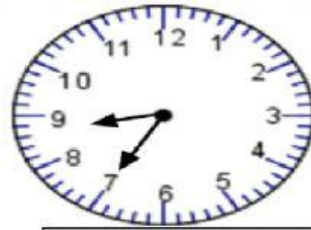
Write the time shown on the clock?



Write here



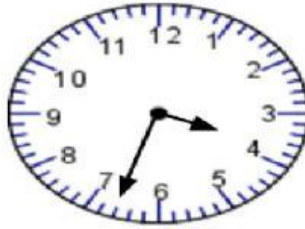
Write here



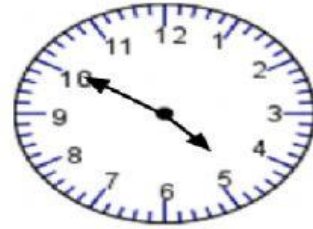
Write here



Write here



Write here



Write here