

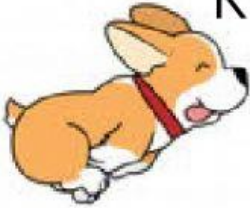
## Consonant Letter Rr



1. Listen and read along with the poem featuring the letter Rr.  
Click on each letter Rr in the poem.



Roy's dog Rover runs all over.  
Rover runs.



Roy's dog Rover runs all over.  
Rover runs.



Rover races, Rover chases,  
Rover chews on Roy's shoelaces.  
Oh, yes, Rover runs all over.  
Rover runs.

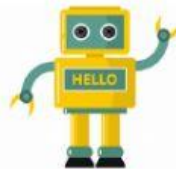


2. Identify the pictures. Check "yes" if the word starts with the letter r. Check "no" if the word does not start with the letter r.



yes no

--	--



yes no

--	--



--	--



--	--



--	--



--	--



--	--



--	--