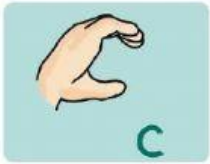
















Mónica Rubio Muñoz
Especialista en audición y lenguaje

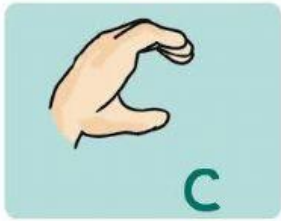
Comunic@te

EMPIEZA POR CA CO CU

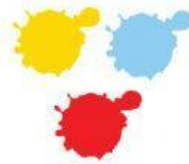


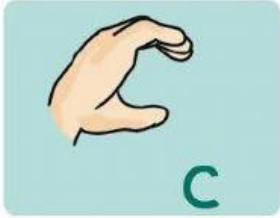
Rodea el dibujo que empiece por la silaba establecida

CA				
CO				
CU				

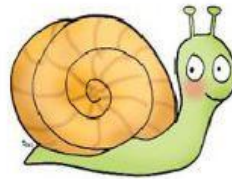
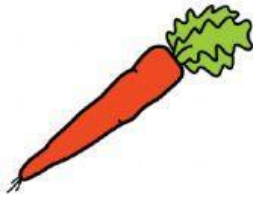
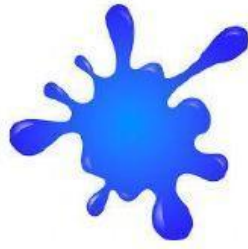
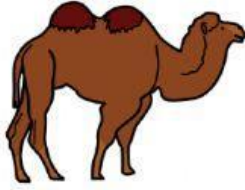


Pon un gomet en los dibujos que
empiecen por el sonido
/CA/ /CO/ /CU/



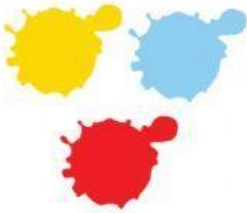


SEÑALA LOS DIBUJOS QUE EMPIECE POR
EL SONIDO /CA/





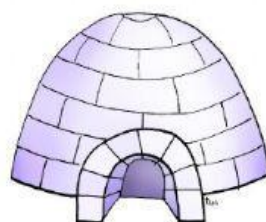
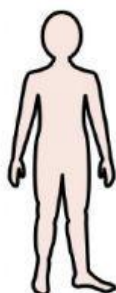
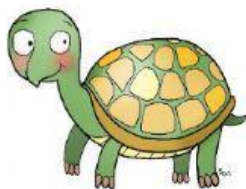
SEÑALA LOS DIBUJOS QUE EMPIECE POR
EL SONIDO **/CO/**





C

SEÑALA LOS DIBUJOS QUE EMPIECE POR
EL SONIDO /CU/



Comunicote

LIVEWORKSHEETS

- SI TE GUSTO LA ACTIVIDAD SIGUEME EN MI BLOG 
- SUSCRÍBETE A MI CANAL YOUTUBE
- COMPARTE CON TUS AMIGOS.



Imágenes de www.flaticon.com <http://www.arasaac.org/> y propias