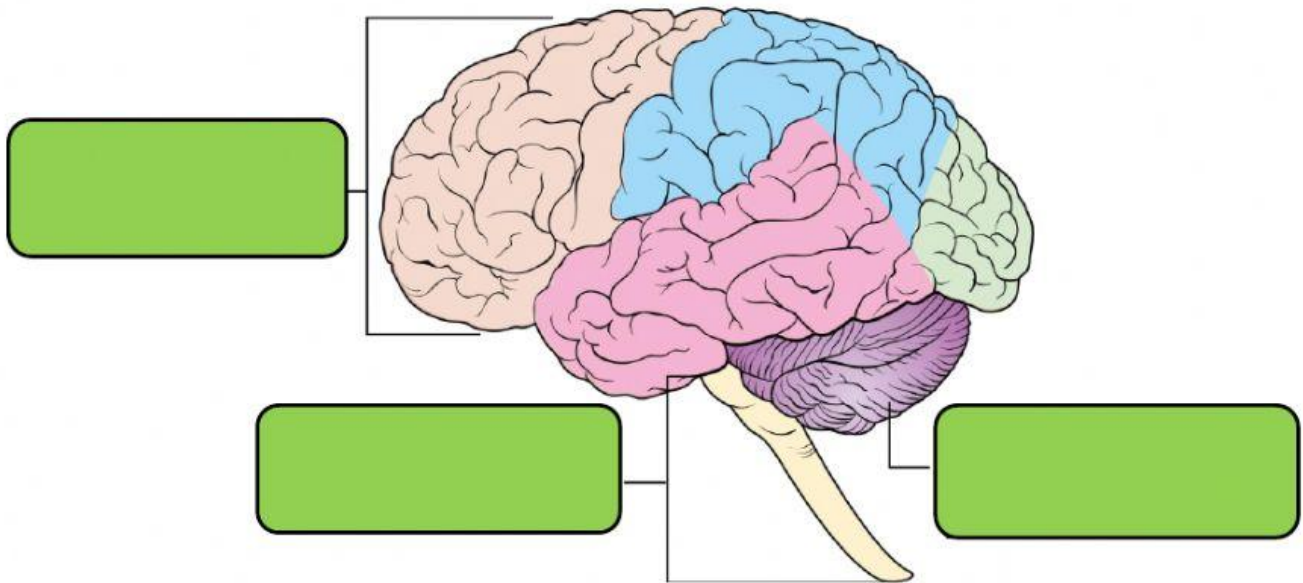


**A. Label the illustration with the main parts of the brain.
Select your answer from the box.**



B. Read and match the parts with the functions of the brain.

Cerebellum

It is the biggest part of the brain and controls voluntary movements.

Cerebrum

It is the part of the brain that controls your sense of balance, movement, and coordination.

Brain stem

It is in charge of those bodily functions that keeps you alive or controls the involuntary movements.