



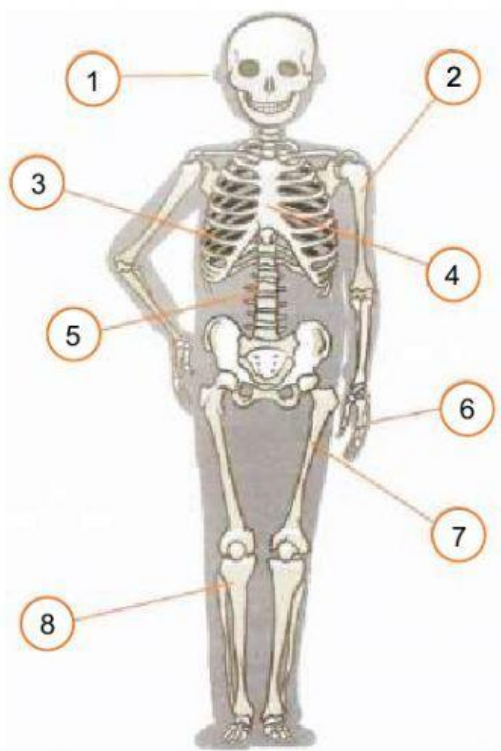
## The Skeletal System

- 1 Match the bone groups to their functions. Then match the functions to their locations.

skull •	• hold up the body •	• limbs
spine •	• protects the brain •	• trunk
tibia and fibula •		• head

- 2 Use the words to label the bones in the skeleton.

hand bones	ribs	tibia	vertebrae
femur	humerus	sternum	skull



1. \_\_\_\_\_
2. \_\_\_\_\_
3. \_\_\_\_\_
4. \_\_\_\_\_
5. \_\_\_\_\_
6. \_\_\_\_\_
7. \_\_\_\_\_
8. \_\_\_\_\_