

# Attack on Pearl Harbor

**Open cloze. Write only one word per blank.**

Sunday, December 7, 1941, was \_\_\_\_\_ to be a day of rest for the military soldiers at Hawaii's Pearl Harbor naval base on the island of Oahu. But at 7:55 a.m., Japanese fighter planes zoomed in \_\_\_\_\_ warning and attacked the United States Pacific fleet moored in the harbor. Thousands of lives would be \_\_\_\_\_ that day.

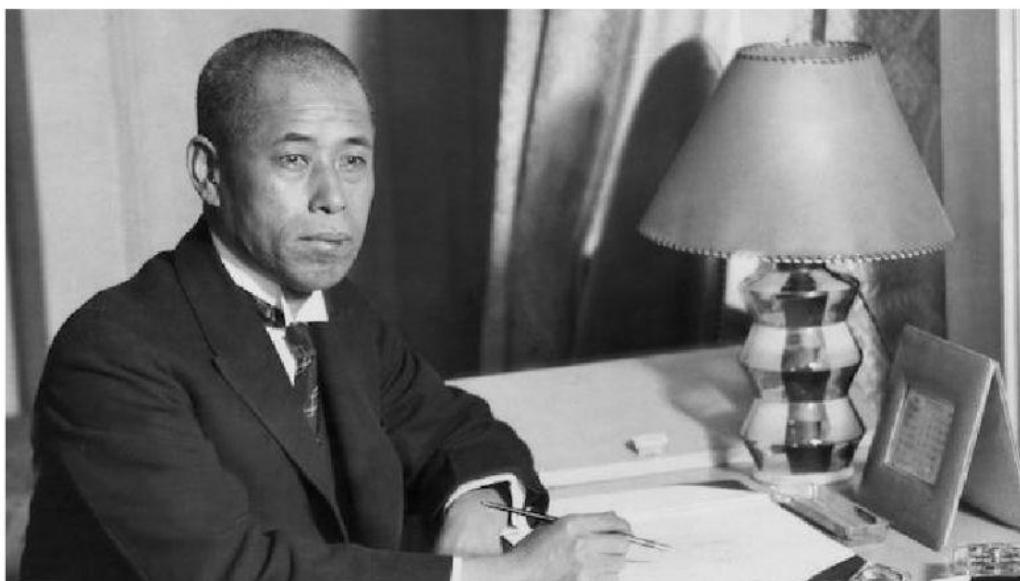
It was, as then President Franklin Delano Roosevelt would call it, "a date which will live in infamy."



Franklin Delano Roosevelt was president of the United States at the time of the attack on Pearl Harbor.

## THE PLAN

The sudden attack in Hawaii—at the time a territory of the United States, not a state—might have \_\_\_\_\_ many by surprise, but the Japanese \_\_\_\_\_ been planning the operation for months.



Admiral Isoroku Yamamoto, architect of the attack on Pearl Harbor

Admiral Isoroku Yamamoto, commander in chief of the Japanese naval forces and architect of the Pearl Harbor attack, didn't want a fight with America. But much of Europe and Asia, including Japan, \_\_\_\_\_ involved in World War II at the time. Yamamoto wanted to take \_\_\_\_\_ certain countries in southeastern Asia and use their oil to help fuel Japan's military vehicles and naval fleet.

But because the U.S. base in Hawaii was relatively close to these countries, the Japanese worried that the United States would \_\_\_\_\_ soldiers from Pearl Harbor to defend the nations if they were attacked. By destroying the U.S. military presence in the region, the countries Japan wanted to target would \_\_\_\_\_ left vulnerable. So Yamamoto decided to move forward with a surprise attack on the U.S. fleet in Hawaii.



An aerial view of part of Pearl Harbor before the attack on December 7, 1941

So on November 26, 1941, 31 warships carrying fighter planes and bombers slipped from Japan into the North Pacific. They moved silently \_\_\_\_\_ they closed in on the Hawaiian Islands. A small Japanese plane made a loop around the target and radioed back: "Pearl Harbor sleeps."

## THE ATTACK



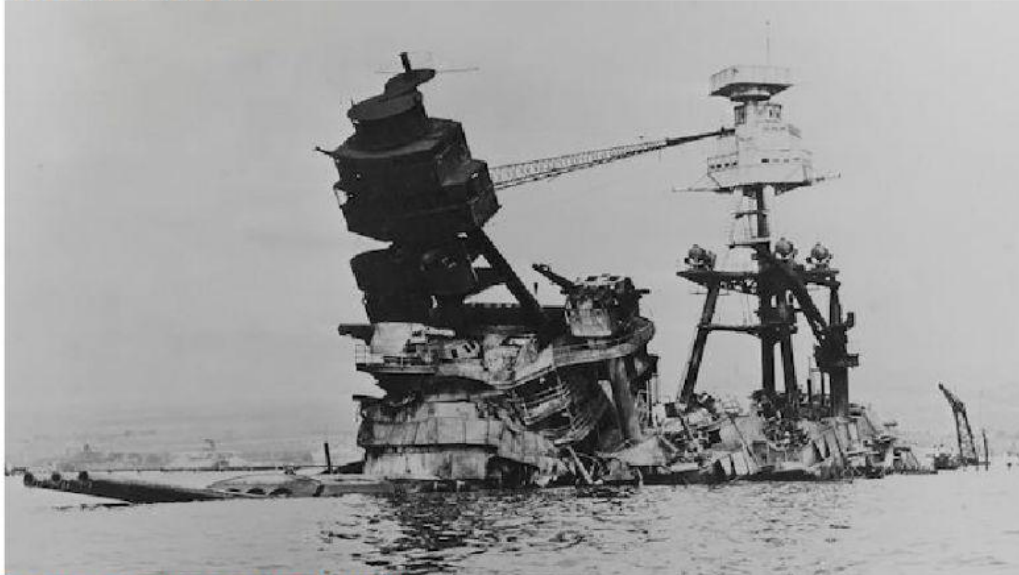
Sailors stand amid wrecked planes, watching as the U.S.S. Shaw explodes in the center background.



At dawn on December 7, 350 planes launched in two waves from Japan's ships. The bombers \_\_\_\_\_ bombs on American warships below, \_\_\_\_\_ the fighter planes targeted the U.S. aircraft on the ground so they couldn't fight back.

Following both attacks, 19 U.S. naval vessels were sunk or damaged; 188 aircraft were destroyed. In all, 2,280 servicemen and women were killed, 1,109 were wounded. Sixty-eight civilians also lost their \_\_\_\_\_. The attack \_\_\_\_\_ just under two hours.

## THE AFTERMATH



The U.S.S. Arizona is sunk at Pearl Harbor.

Repair crews went to work on the ships. Except for the U.S.S. *Arizona*, *Utah*, and *Oklahoma*, \_\_\_\_\_ damaged ship returned to sea.

The day after the attack, the United States \_\_\_\_\_ war on Japan, officially entering World War II. In the nearly four years that followed, the U.S. Navy sank all of the Japanese aircraft carriers, battleships, and cruisers that participated in the Pearl Harbor attack.

The United States and its allies—Britain, France, and Russia, among other countries—eventually won the war, \_\_\_\_\_ Japan and its allies, Germany and Italy.



The Pearl Harbor National Monument is built on the water above the wreckage of the U.S.S. Arizona.

Today visitors can tour the Pearl Harbor National Monument, built on the water above the wreckage of the U.S.S. *Arizona*, one of the eight battleships attacked and damaged during the \_\_\_\_\_. From there you can still glimpse at the remains of the \_\_\_\_\_ ship 40 feet below the water, a memorial to the brave people who \_\_\_\_\_ in this important battle.