

# UNIT 3

## Singular affirmative

### Long form

I am  
You are  
He is  
She is  
It is

### Short form

I'm  
You're  
He's  
She's  
It's



I'm a student.



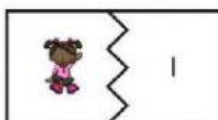
1 You \_\_\_\_\_ a student.



2 He / She \_\_\_\_\_ a student.



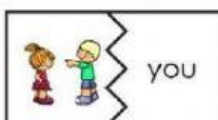
3 It \_\_\_\_\_ an alien!



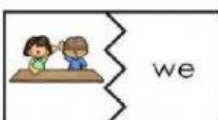
I



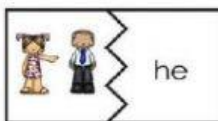
it



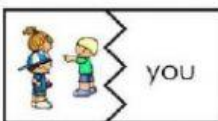
you



we



he



you



she



they

Completa con *am, is* or *are*.

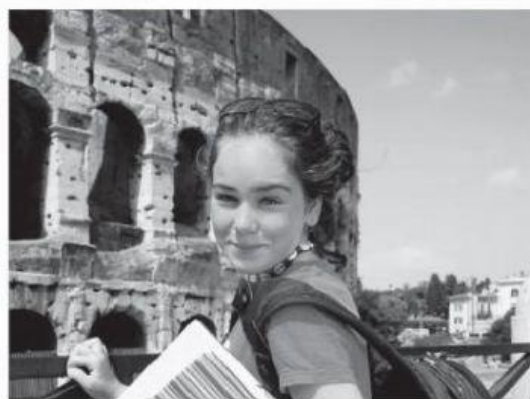
- I \_\_\_\_\_ *am* Max.
- You \_\_\_\_\_ Katie.
- She \_\_\_\_\_ Sonia.
- We \_\_\_\_\_ Mike and Shelly.
- We \_\_\_\_\_ in a classroom.
- It \_\_\_\_\_ a very nice classroom.
- I \_\_\_\_\_ very happy.
- We \_\_\_\_\_ in our English lesson.

Elige la opción correcta:

The student are / am / is at school.

- Mario are / is / am Rosa's friend.
- I 's / 'm / 're in English class now.
- This am / is / are my pencil case.
- Mr Ross are / am / is a teacher.
- You 's / 're / 'm welcome!

Une con flechas las dos partes de la oración:



- |   |         |     |            |
|---|---------|-----|------------|
| 1 | She     | is  | green      |
| 2 | You     | is  | a ruler    |
| 3 | I       | are | from Italy |
| 4 | The bag | is  | a nice boy |
| 5 | He      | am  | at school  |
| 6 | It      | is  | my friend  |