

Maurice E. Moore Primary School
Bi-Weekly Assessment #1
Reading Comprehension
Topics: Characteristics of a Good Listener and Text Features

Section A - Characteristics of a Good Listener

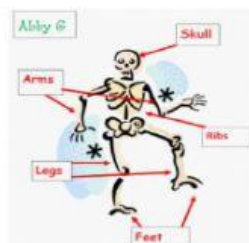
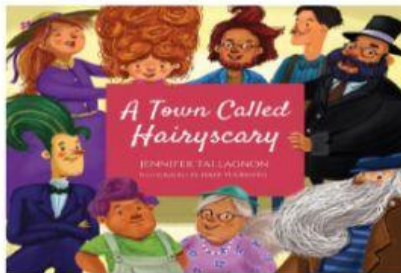
Directions: Read each statement below. If the statement is **True**, write T. If the statement is **False**, write F. 3pts.

1. A good listener should always focus on the speaker.
2. Good listeners should raise their hand and ask questions at any time.
3. A good listener should always have his or her hands free.

Section B - Text Features

Directions: Use the words from the word-bank to label each text feature. **7pts.**

glossary	spine	title	Table of Contents
heading	illustrations	labels	bold



Creating a Balanced Literacy Program

Sumner's *Sign Post* program for Reading Success is designed to be an integral part of a balanced literacy program. In addition to the lessons provided in this book, you'll want to explore various resources in your language arts curriculum, as well as the many other resources that will help you plan for the program. You'll find that the many other resources that will help you plan for the program. You'll find that the many other resources that will help you plan for the program. You'll find that the many other resources that will help you plan for the program.