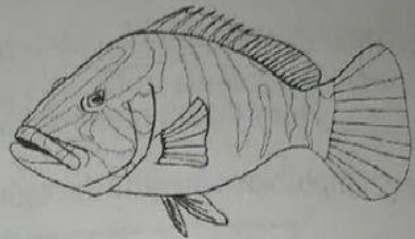


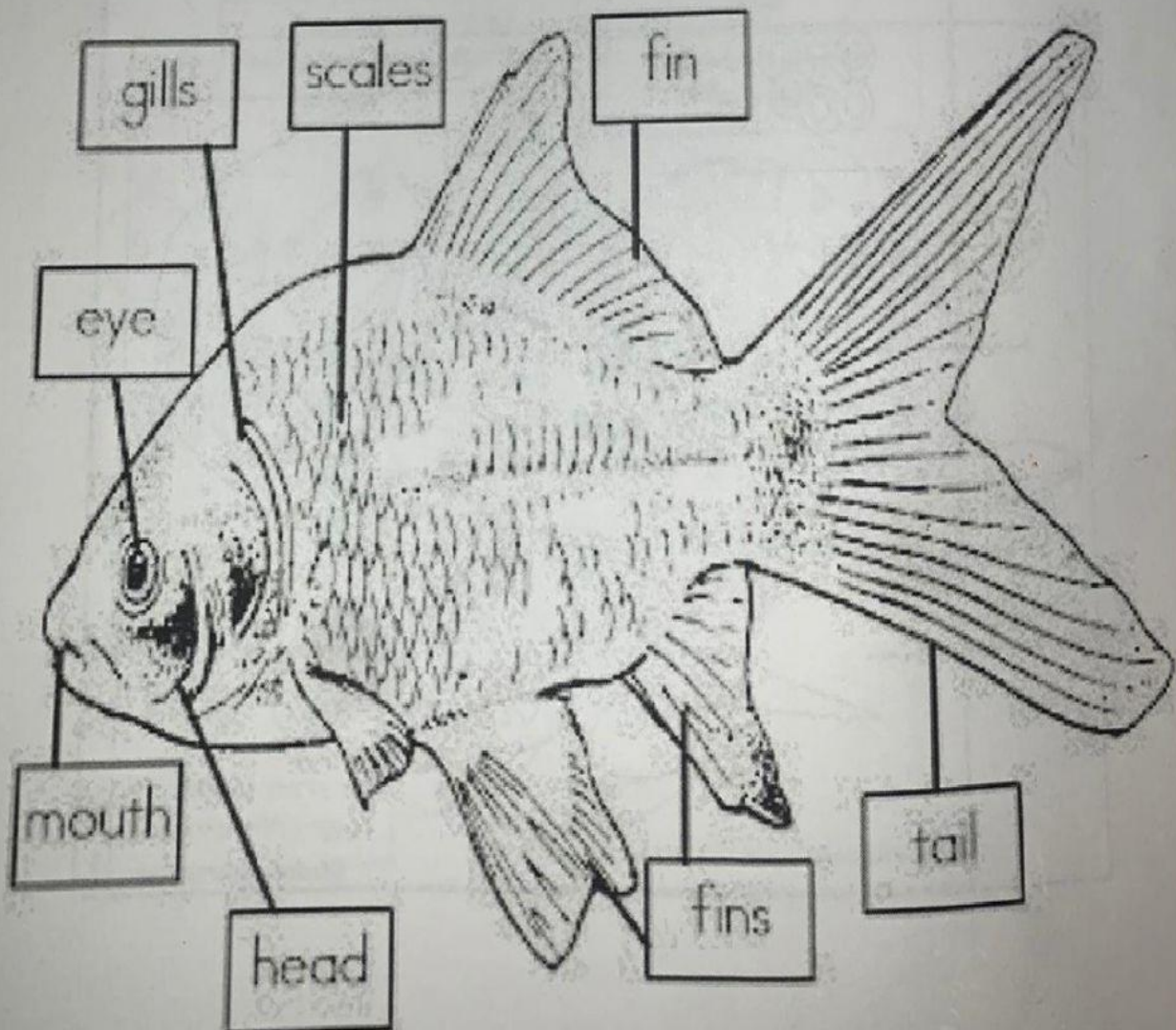
Fish

Fish live in water. They are covered with **scales** and have **fins**. **Fins** help them move through the water. Fish breathe through their **gills** and lay **eggs**. Fish are **cold-blooded** animals. This means that their body temperature changes as their environment changes.

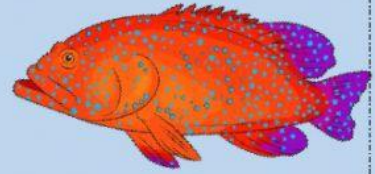
The **Nassau Grouper** is one of the largest fish on the reef. It has (5) five dark bars on the body and, a dark band running from snout, through the eye to the forehead side of dorsal fin and a dark spot on the base of the tail fin. It changes colour depending on the environment it is in. This helps to hide it so it can ambush fish to eat. Humans are the predators that have the biggest impact on the grouper populations.



brown
the
the



FISH



Directions: Answer the following questions.

1. Where do fish live? (1)

- a) in trees
- b) in water
- c) in forests

2. Fish are covered with (1)

- a) fur
- b) feathers
- c) scales

3. How do fish breathe? (1)

- a) Fish use lungs to breathe
- b) Fish use gills to breathe
- c) Fish use scales to breathe

4. How do fish have their young? (1)

5. What is the meaning of the term cold-blooded? (2)

6. Describe the body of the Nassau Grouper. (3)

7. How does the Nassau Grouper protect itself from enemies ? (1)

