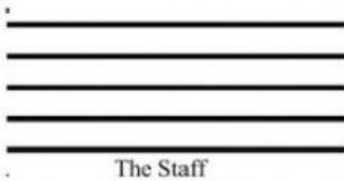


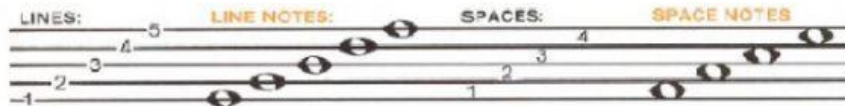
The Staff & Pitches



A staff is made up of 5 lines and 4 spaces.
Music is notated on a staff.



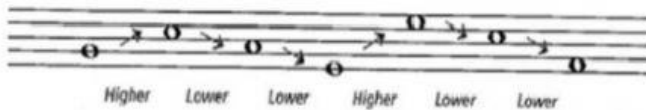
The Staff



The lines of a staff are numbered or counted from the bottom to the top. The spaces between the lines of the staff are counted or numbered from the bottom to the top.

The oval shaped symbols on the lines and space in the diagram above are music notes. They are used to represent sound called pitches.

When the notes appear higher on the staff, they are higher in pitch. The notes are lower in pitch if they appear lower on the staff.



1. Indicate the position of the note by putting **L** (line) or **S** (space) and the number (eg. L2, S4)



2. Use the letters **H** and **L** to indicate whether the first note of each measure sounds higher (H) or lower (L) in pitch than the second note

