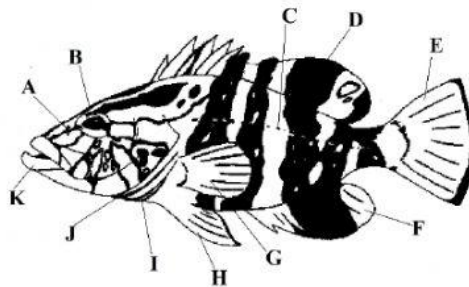


# NASSAU GROUPE WORKSHEET

Name: \_\_\_\_\_

Date: \_\_\_\_\_

Class: \_\_\_\_\_



## PART A: Classification of The Nassau Grouper:

**Instructions:** Complete the table below.

|                |                |
|----------------|----------------|
| <b>KINGDOM</b> |                |
| <b>PHYLUM</b>  |                |
| <b>CLASS</b>   | Actinopterygii |
| <b>ORDER</b>   | Perciformes    |
| <b>FAMILY</b>  | Serranidae     |
| <b>GENUS</b>   |                |
| <b>SPECIES</b> |                |

## PART B: True or False

**Instructions:** *Write T on the line* if the statement is TRUE, and *write F on the line* if the statement is FALSE.

- \_\_\_\_\_ 1. The Nassau Grouper is an invertebrate.
- \_\_\_\_\_ 2. The Nassau Grouper breathes using gills.
- \_\_\_\_\_ 3. The genus of the Nassau grouper is *striatus*.
- \_\_\_\_\_ 4. The Nassau grouper spends most of its adult life floating on ocean currents.
- \_\_\_\_\_ 5. The Nassau Grouper is a carnivore.
- \_\_\_\_\_ 6. Spawning sites are also called grouper holes.
- \_\_\_\_\_ 7. A spawning aggregation is the habitat of the Nassau Grouper.
- \_\_\_\_\_ 8. The closed season gives groupers time to rest.
- \_\_\_\_\_ 9. Groupers form spawning aggregations to mate.
- \_\_\_\_\_ 10. The grouper is able to change color when they are ready to mate.
- \_\_\_\_\_ 11. The eggs of the grouper are fertilized internally.
- \_\_\_\_\_ 12. Adult Nassau Groupers can be found in the mangrove creeks.
- \_\_\_\_\_ 13. Nassau groupers are said to be sexually mature after 7 years.
- \_\_\_\_\_ 14. The habitat of the juvenile Nassau Grouper is deeper coral reefs.
- \_\_\_\_\_ 15. Nassau groupers are able to change their sex from female to male
- \_\_\_\_\_ 16. Only the male Nassau groupers are able to change color when ready to spawn.