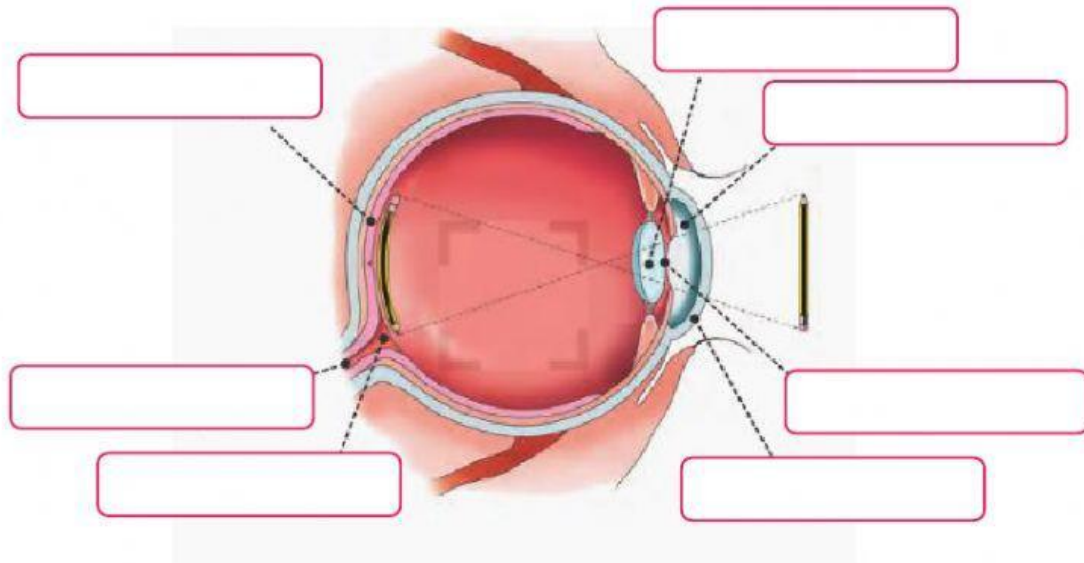


THE FIVE SENSES: SIGHT

1.- Complete the picture using the words in the box.

| | | | |
|-------|--------|-------------|-------|
| FOVEA | IRIS | RETINA | PUPIL |
| LENS | CORNEA | OPTIC NERVE | |



2.- Complete.

- 1.- Light passes through the _____ and enters the eye through the _____.
- 2.- The coloured part of the eye is the _____. It controls the size of the pupil and the amount of light that enters the eye.
- 3.- The _____ focuses the light on the _____ at the back of the eye.
- 4.- Nerve receptors in the retina detect light and send electrical signals to the _____. From there, the signals are carried to the brain.
- 5.- The _____ is where the optic nerve meets the retina. The _____ is a blind spot because it cannot detect light.