

Human Digestive system - Test

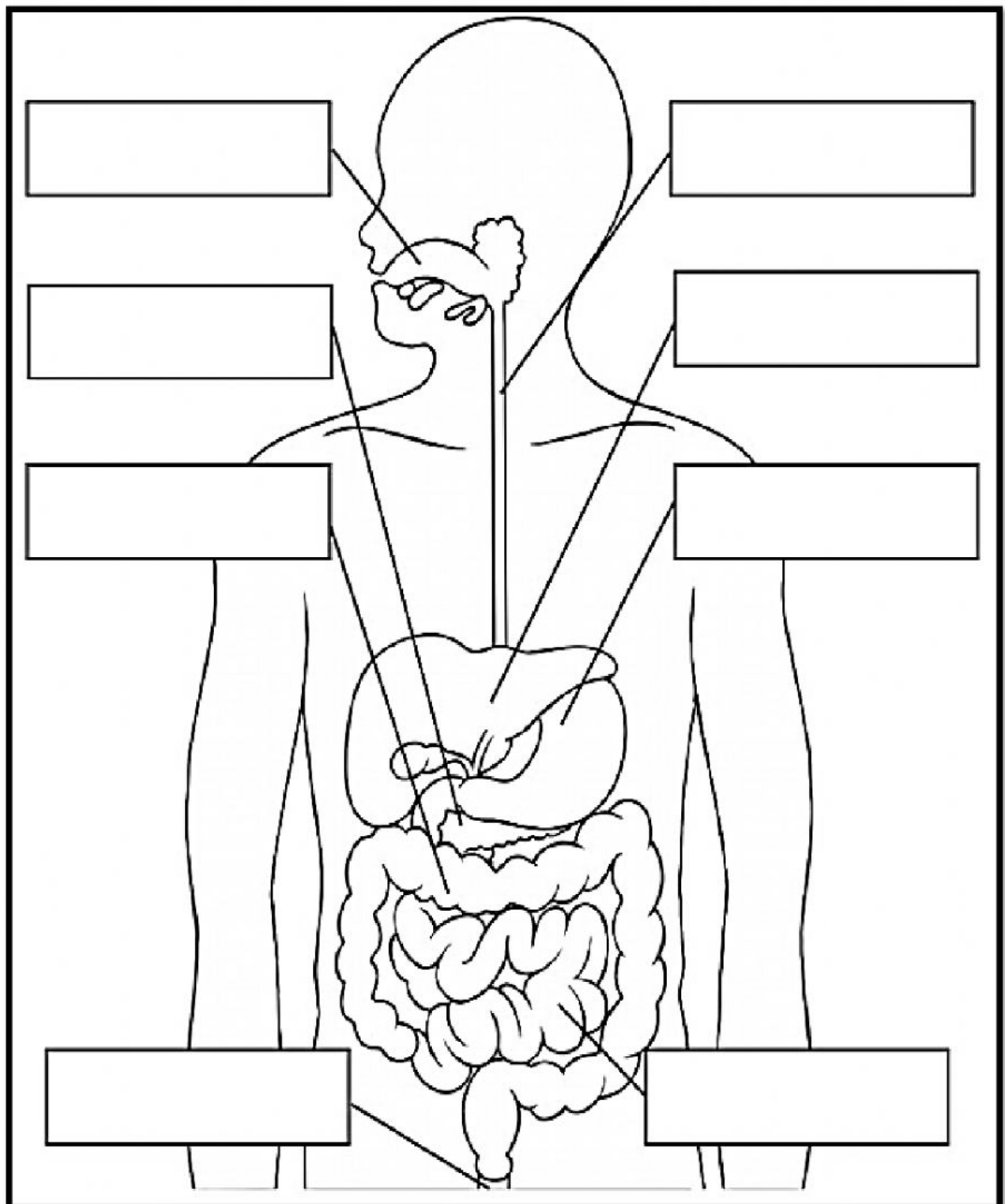
Section A : Choose the correct answer.

1. Your body obtains raw materials from food by the process of _____?
 - A. Digestive system
 - B. Digestion
 - C. Mouth
 - D. Saliva
2. Which of the following do we get from our food?
 - A. Power
 - B. Energy
 - C. Volts
 - D. Amps
3. What do enzymes do?
 - A. Cool down hot food
 - B. Separate meat from vegetables
 - C. Help break down your food
 - D. Help you convert oxygen to water
4. Why do we need to break apart the food we eat?
 - A. So it can fit to our stomach.
 - B. So our bodies can use the nutrients from food.
 - C. So liquids can be separated by solids.
 - D. So that the body have something to do.
5. What is the liquid in your mouth called?
 - A. Tongue
 - B. Oesophagus
 - C. Bile
 - D. Saliva
6. Saliva contains chemicals that change starch into _____.
 - A. Sugar
 - B. Fats
 - C. Proteins
 - D. Bile
7. Before the stomach the food travels down through the ...
 - A. Oesophagus
 - B. Duodenum
 - C. Arteries
 - D. Lungs

8. In which organ does peristalsis occur?
- A. Oesophagus
 - B. Small intestine
 - C. Large intestine
 - D. All of the above
9. Which of the following is NOT found inside of the stomach?
- A. Acid
 - B. Chyme
 - C. Enzymes
 - D. Bile
10. Acid in your stomach activates enzymes that start digestion. What else does it do?
- A. Keeps you hydrated
 - B. Converts carbohydrates to simple sugars
 - C. Cools you down
 - D. Kills bacteria
11. Which organ is NOT part of the digestive system?
- A. Stomach
 - B. Kidney
 - C. Rectum
 - D. Gall bladder
12. Which organ is not part of the alimentary canal?
- A. Oesophagus
 - B. Liver
 - C. Stomach
 - D. Small intestine
13. Bile is produced in the...
- A. Gall bladder
 - B. Duodenum
 - C. Liver
 - D. Pancreas
14. Peristalsis is responsible for...
- A. Blindness
 - B. Pushing food along the gut
 - C. Migraines
 - D. Nausea

Section B : Name the parts of alimentary canal and its associated organs.

(Reminder : The spelling of the parts should be correctly name)



Section C : Match the parts of alimentary canals and the organs with their functions.

Mouth	Holds the food to be broken up by the Hydrochloric acid. The acid also kills the present of bacteria.
Oesophagus	Food travels through this wider tube and becomes waste. It is stored in the rectum.
Stomach	Food is chewed and mixed with saliva. The saliva contains the enzyme amylase.
Liver	Produces bile which aids the digestion of fats.
Gall bladder	Food travels through this skinnier tube while the nutrients (the digested food of proteins, carbohydrates and fat) are being absorbed into the bloodstream.
Small intestine	Stores bile and releases bile into the small intestine. It also help the body to get rid of toxins.
Large intestine	The tube that carries food into the stomach by peristalsis process.
Anus	Where the undigested food from the rectum exits through.