

Name: _____

Date: _____

I. Chapter 7: FORCES THAT SHAPE THE LAND

A. Match the term in Column A with its meaning in Column B. Write the numbers in the parenthesis. Numbers are not repeated. (4 pts)

Column A

1. earthquake

2. glacier

3. plateau

4. volcano

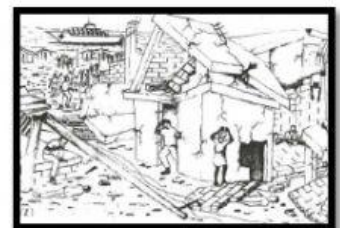
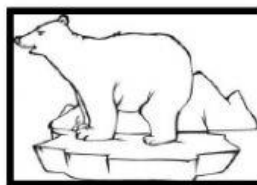
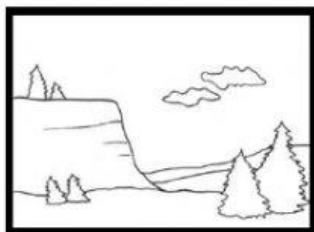
Column B

() An opening on Earth's surface from which lava flows.

() A flat area higher than the land around it.

() A huge block of ice.

() The shaking of Earth's surface.



B) Complete the following definitions with the correct term. Choose the term from the box and drag it the line provided. Terms are not repeated. (4 pts)

canyon	weathering	flood	erosion
--------	------------	-------	---------

1. The way rocks are broken down into smaller pieces is known as _____.
2. A valley with a steep sides is known as _____.
3. A large amount of water that covers a dry land is known as _____.
4. The movement of weathered rock and soil is known as _____.

C) Select the correct answer and mark it with an X. (5 pts)

1. Which of the following is a very slow type of erosion that moves rocks and soil?
a) creep b) fault c) landslide
2. What causes a flood?
a) drought b) heavy rainfall c) gas and ash from a volcano
3. Where can you find beaches?
a) canyon b) mountains c) coastal plains
4. Which of the following causes sand dunes?
a) rain b) wind c) earthquakes
5. Which of the following causes a quick change to the land?
a) volcano b) erosion d) weathering

D) Complete the following statements with the correct word from the word bank. Drag it to the space provided. Terms are not repeated. (3 pts)

landform	valley	mountain
----------	--------	----------

1. A low area between higher lands is known as a _____.
2. A natural shape on Earth's surface is known as a _____.
3. A _____ is formed from Earth's crust.

E) Put the following events about weathering in the correct sequence. Number the steps from 1 to 5. (5pts)

_____ The water freezes and becomes ice.

_____ The crack in the rock becomes wider.

_____ Water gets into a crack in a rock.

_____ The rock breaks.

_____ The frozen water pushes against the sides of the crack.